

Схема для вышивки крестом

# "Цветочное настроение"

Дизайнер Альбина Тумарова  
(Альбинка Малинка)



Вышивка для души

Автор дизайна Альбина Гумарова (Альбинка Малинка)

## «Цветочное настроение»

Размер в стежках: **209 х 209**  
 Размер: **38 х 38** (без учета припусков)  
 Используемое мулине: **DMC**  
 Рекомендуемая к использованию канва: **14 ст ткань равномерного переплетения белая, либо канва 14 каунта белая**  
 Количество цветов: **22 читых и 5 блэндов**

### Крест в 2 нити

Символ	Номер	Количество нитей	Символ	Номер	Количество нитей	Символ	Номер	Количество нитей
	153	2		310	2		347	2
	550	2		552	2		553	2
	554	2		610	2		611	2
	640	2		642	2		644	2
	648	2		760	2		761	2
	815	2		938	2		3023	3
	3072	2		3712	2		3713	3
	3781	2		B5200	2		553+554	1
	760+761	2		347+3712	2		153+5200	2

### Бэкстич или шов назад иголку

Символ	Количество нитей	Номер	Символ	Количество нитей	Номер
	1	310		1	552
	1	761		1	815
	1	B5200			

### Полукрест

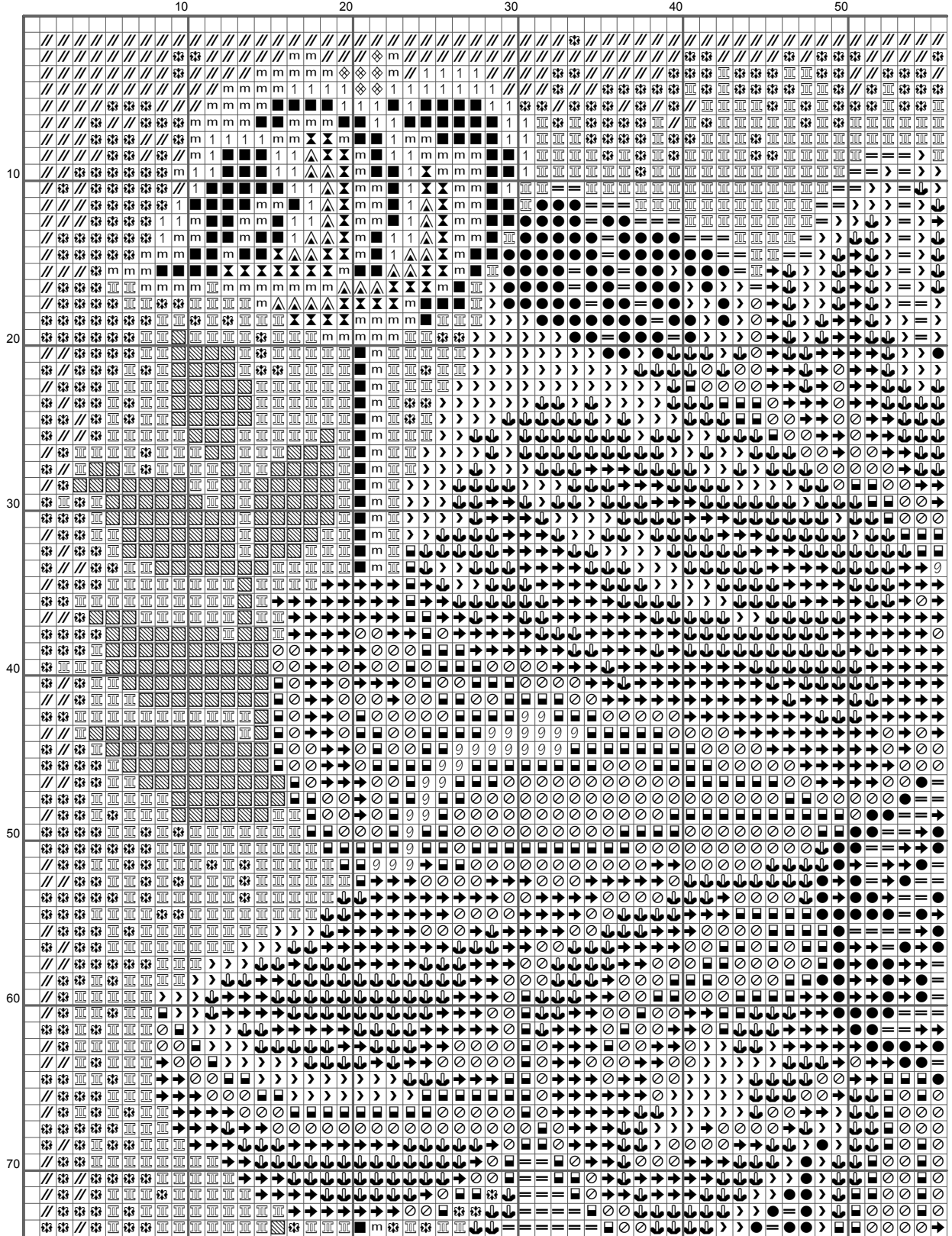
Символ	Количество нитей	Номер	Символ	Количество нитей	Номер
	2	642		2	648
	2	3072			

Ровных и красивых крестиков! Буду рада красивым фото отшитых работ [https://vk.com/vishivka\\_ostrov\\_sokrovich](https://vk.com/vishivka_ostrov_sokrovich)  
 Данная схема защищена авторским правом. Покупая схему, вышивальщица приобретает право вышить эту схему сколько угодно раз, но не распространять ее как бесплатным, так и платным способами. Отнеситесь с уважением к работе дизайнера.

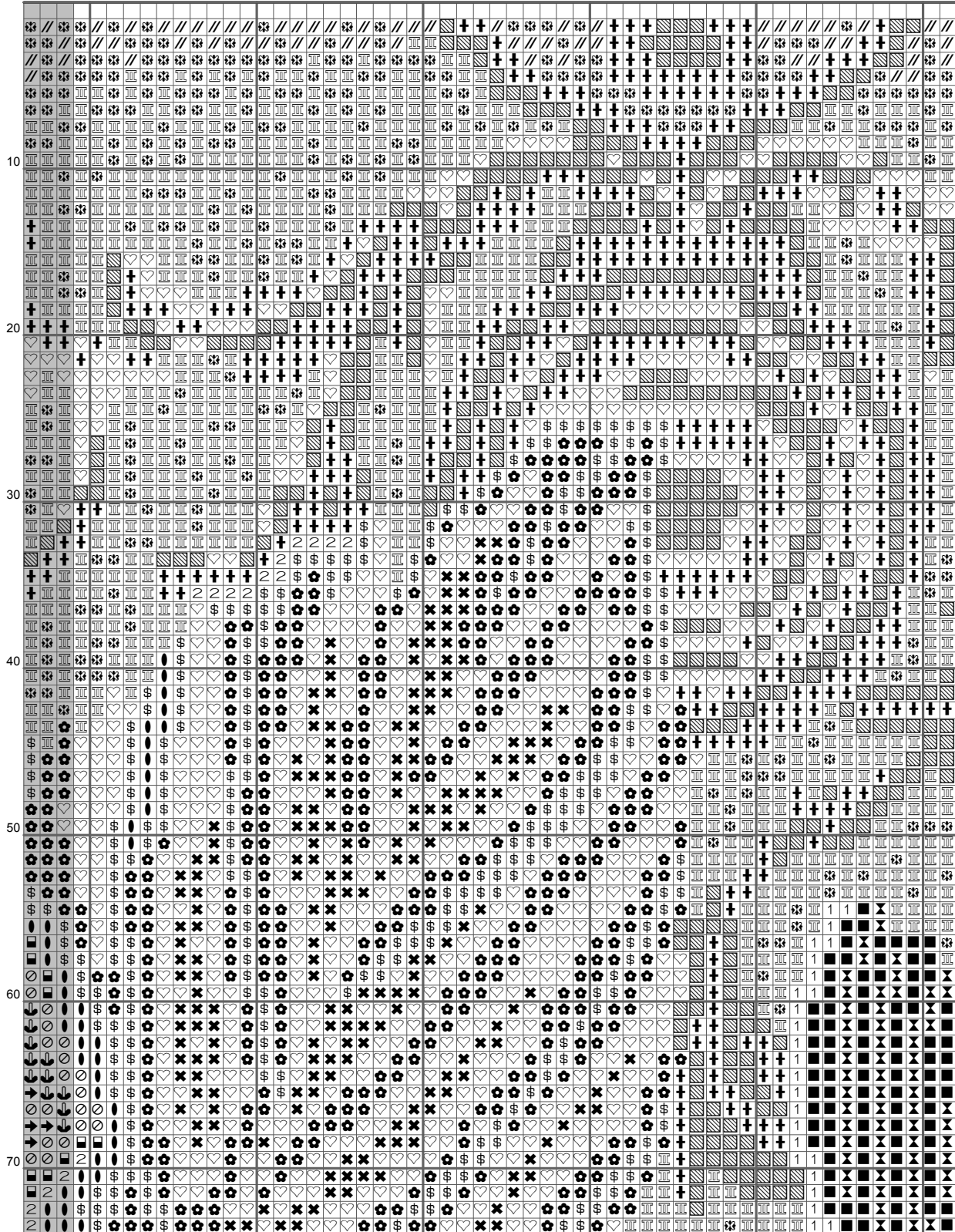
*Расход Мулине для канвы 14 каунта\**

DMC	Длина (м)	Кол-во МОТКОВ	DMC	Длина (м)	Кол-во МОТКОВ
153	12,6	2	648	31	4
310	7,3	1	760	9,1	2
347	8,3	2	761	7,5	1
550	2,5	1	815	2,5	1
552	6,2	1	938	2,1	1
553	17,1	3	3023	17	3
554	15,4	2	3072	20,8	3
610	2,6	1	3712	13,4	2
611	3,6	1	3713	2,9	1
640	8,8	2	3781	2,5	1
642	14	2	B5200	7,2	1
644	6,1	1			

\*Расчет расхода мулине дается с учетом 40% запаса.



	60	70	80	90	100
10	...	...	...	...	...
20	...	...	...	...	...
30	...	...	...	...	...
40	...	...	...	...	...
50	...	...	...	...	...
60	...	...	...	...	...
70	...	...	...	...	...



160

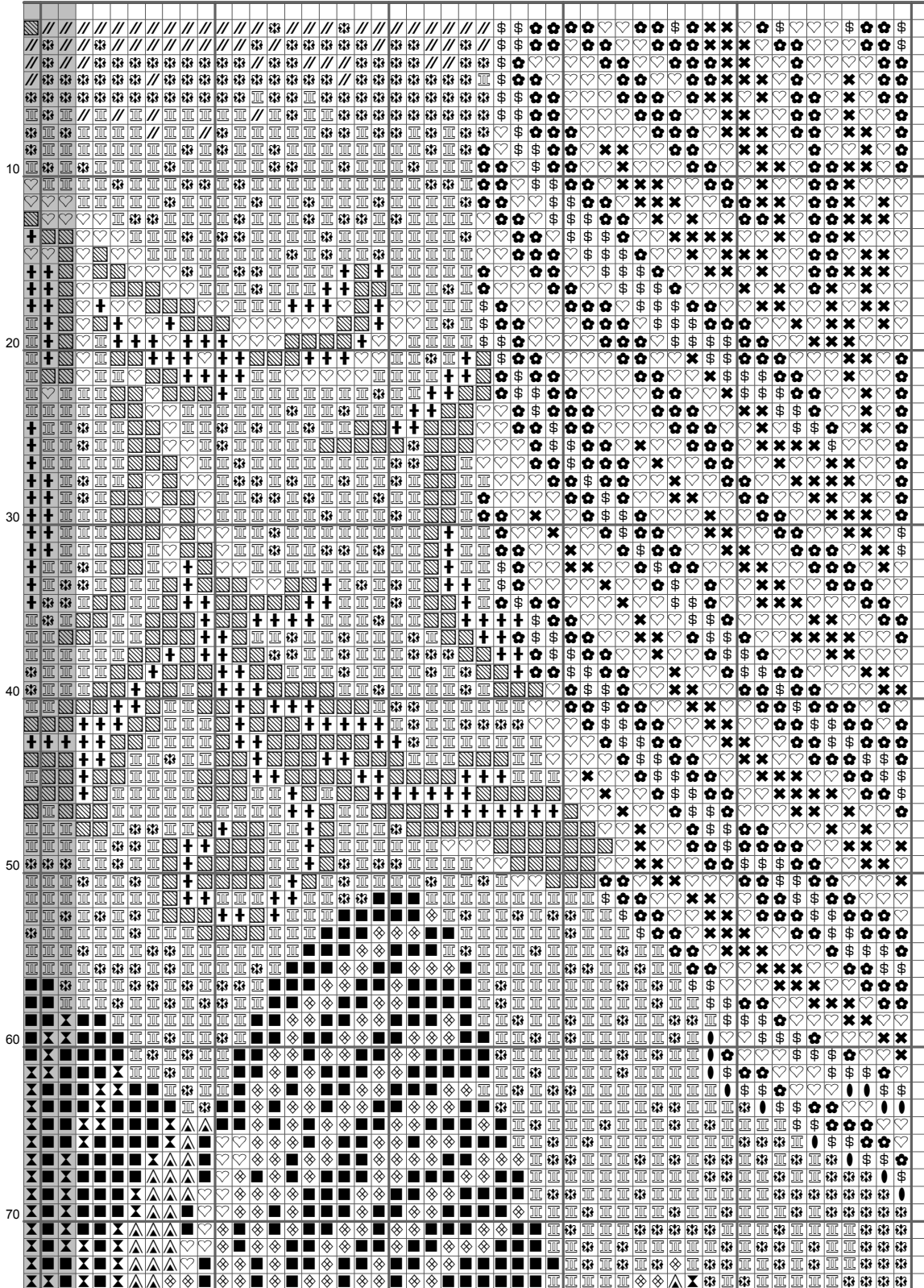
170

180

190

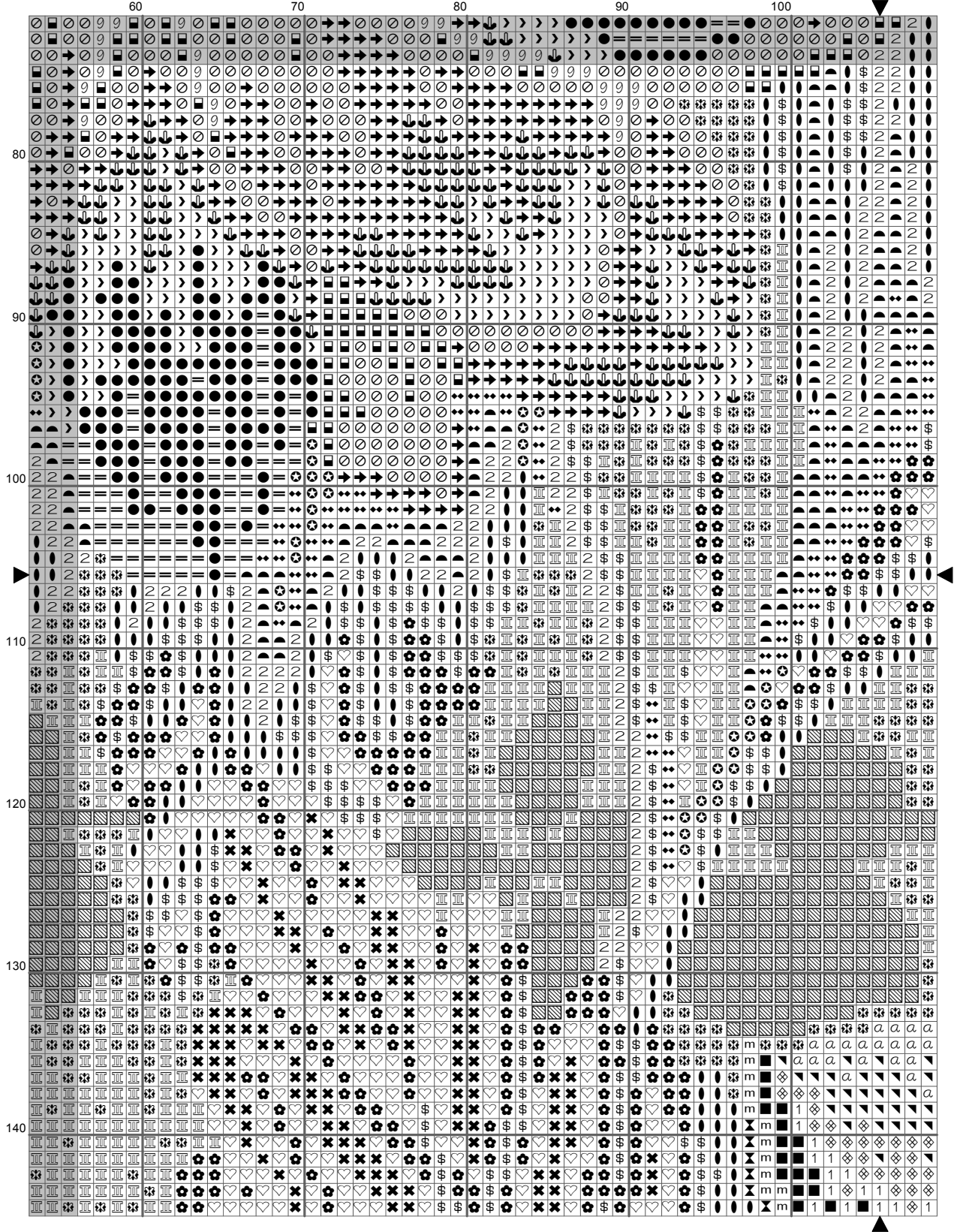
200

210









110

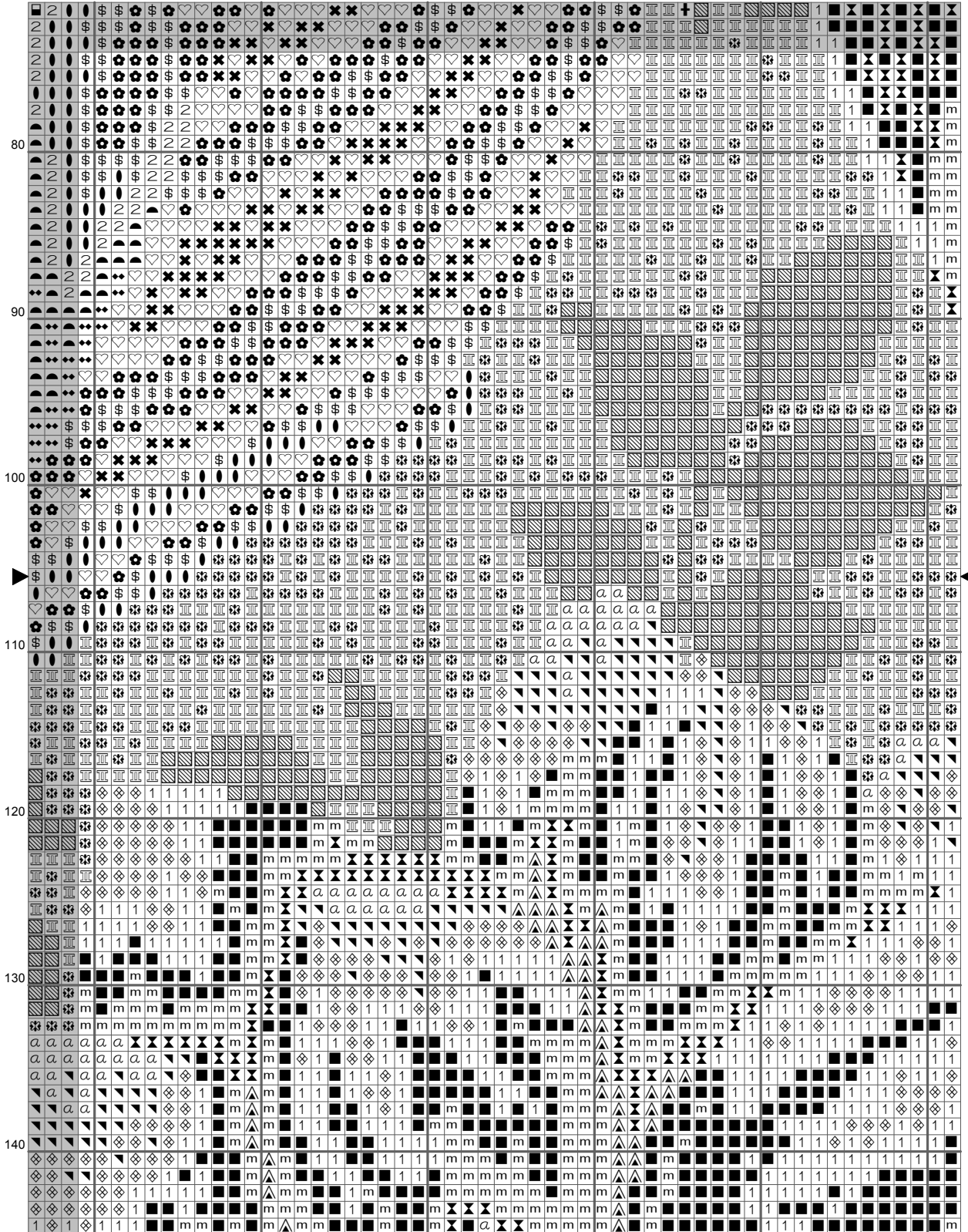
120

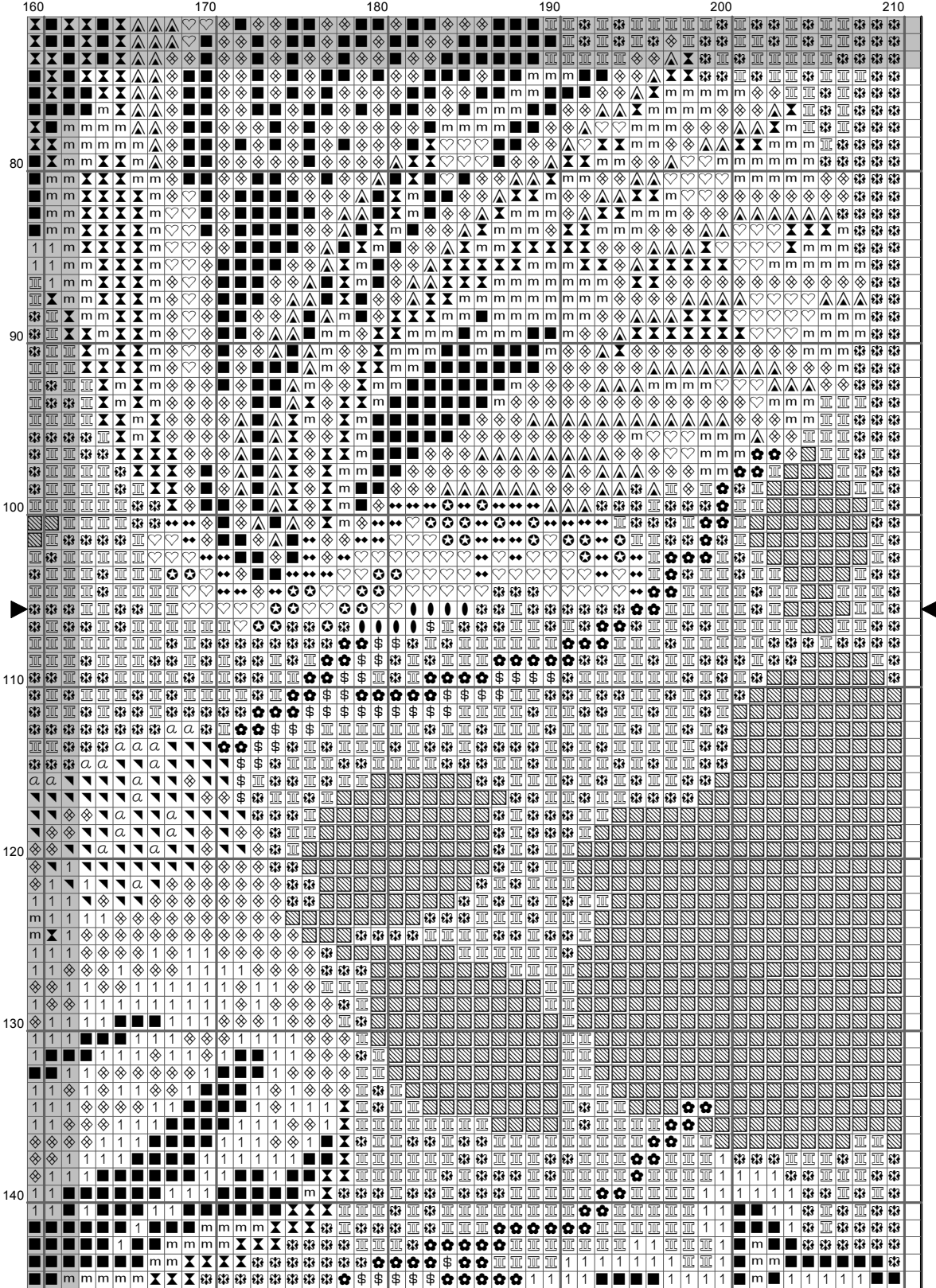
130

140

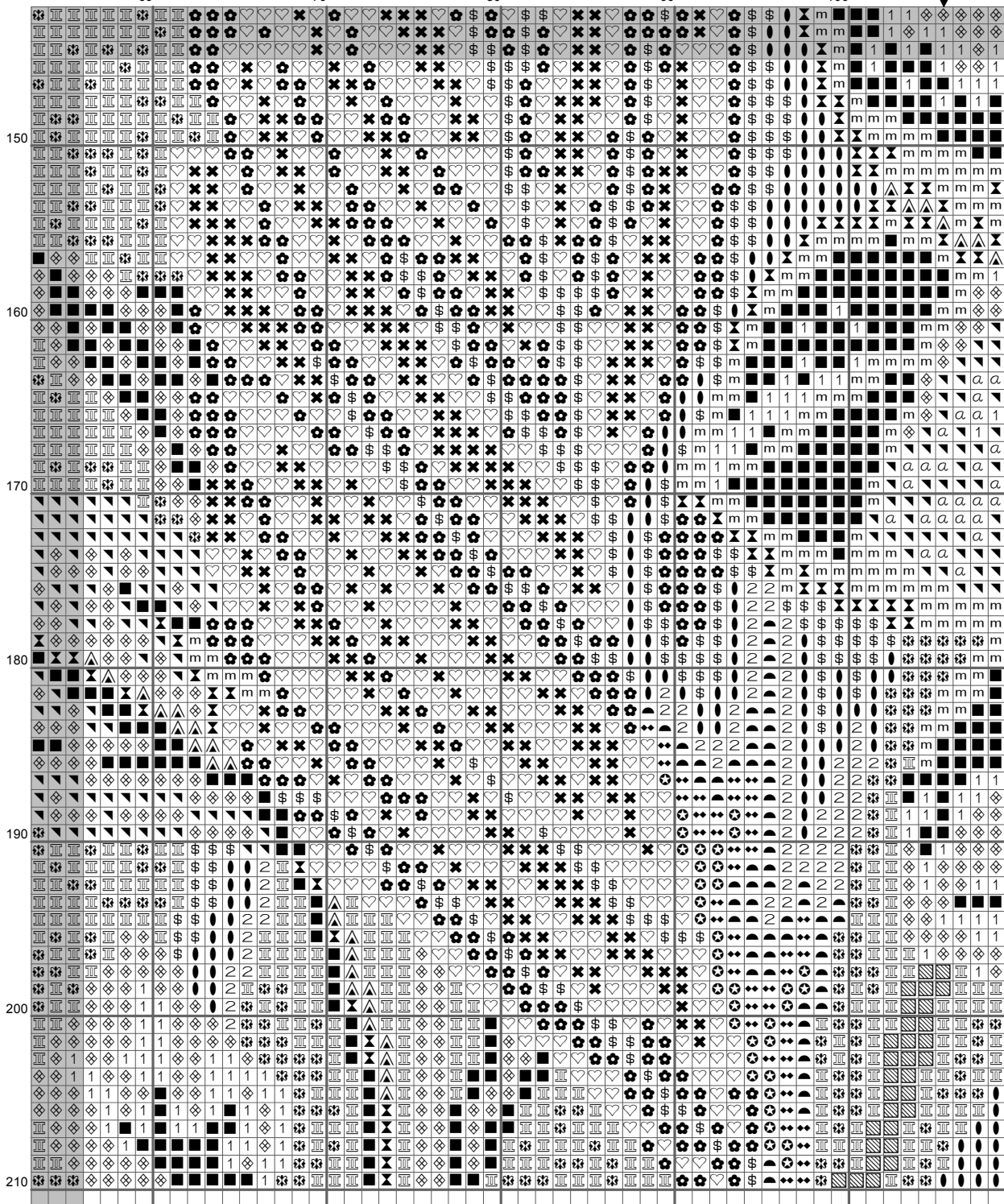
150

160

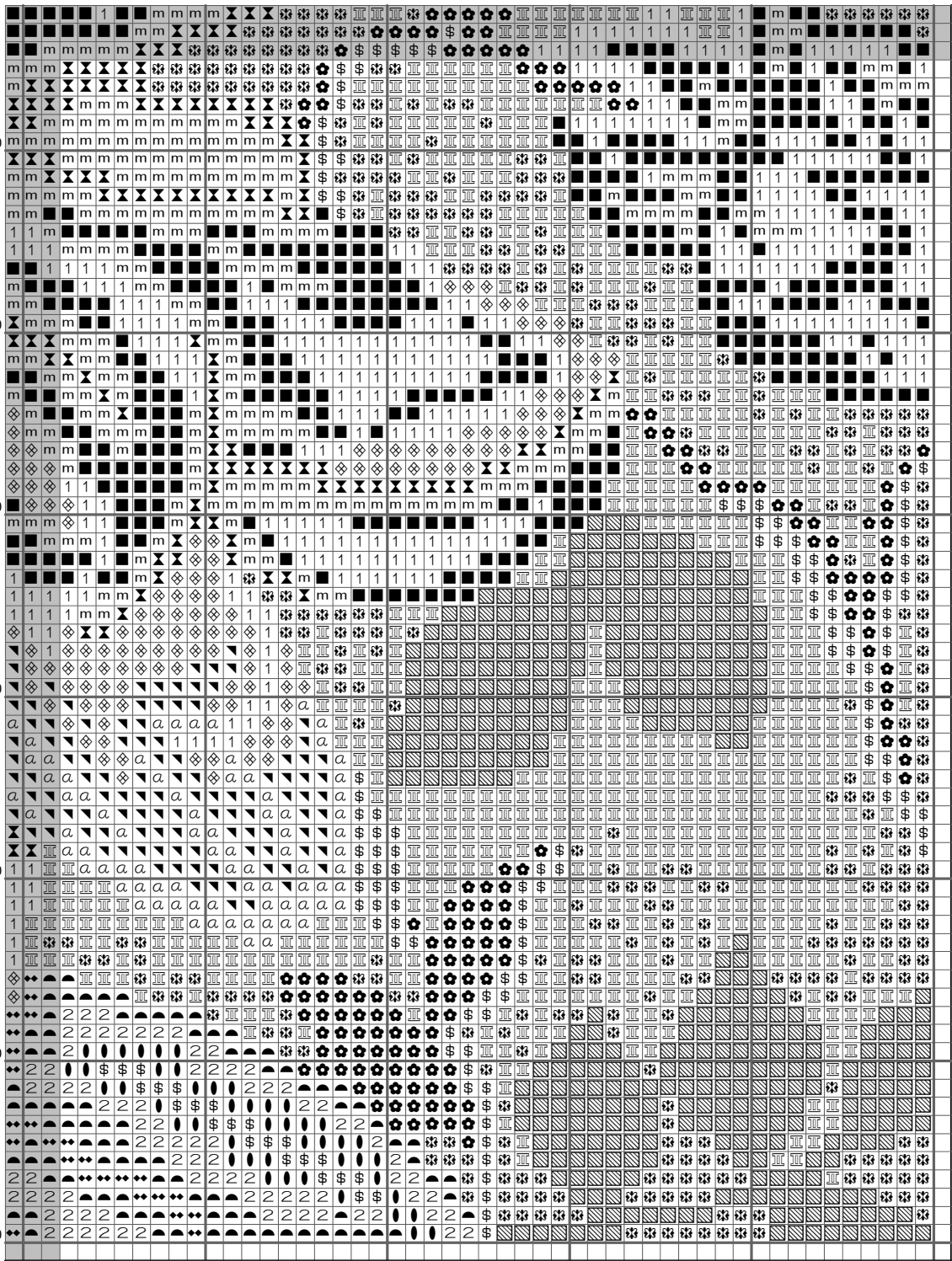


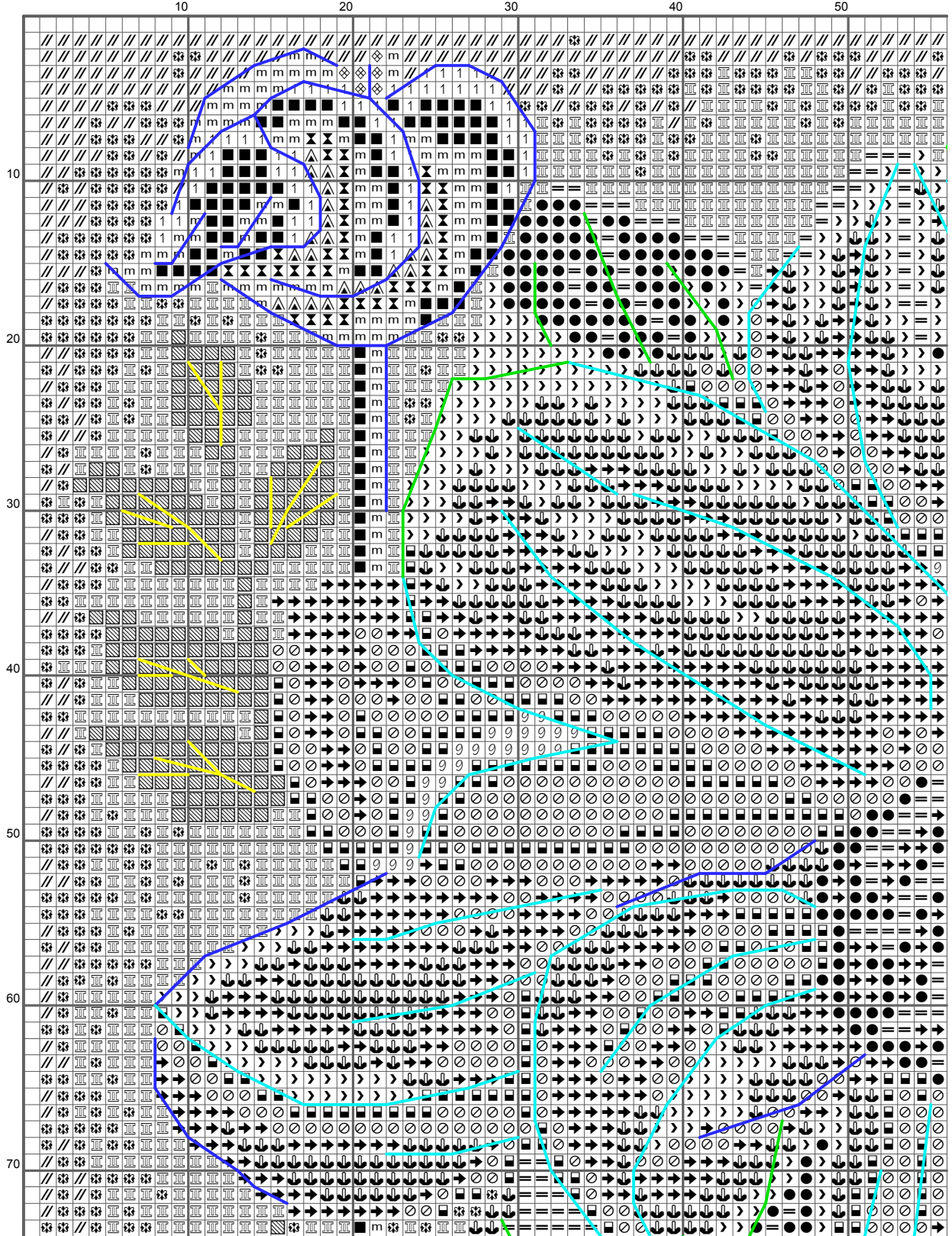


	10	20	30	40	50
150	///	///	///	///	///
151	///	///	///	///	///
152	///	///	///	///	///
153	///	///	///	///	///
154	///	///	///	///	///
155	///	///	///	///	///
156	///	///	///	///	///
157	///	///	///	///	///
158	///	///	///	///	///
159	///	///	///	///	///
160	///	///	///	///	///
161	///	///	///	///	///
162	///	///	///	///	///
163	///	///	///	///	///
164	///	///	///	///	///
165	///	///	///	///	///
166	///	///	///	///	///
167	///	///	///	///	///
168	///	///	///	///	///
169	///	///	///	///	///
170	///	///	///	///	///
171	///	///	///	///	///
172	///	///	///	///	///
173	///	///	///	///	///
174	///	///	///	///	///
175	///	///	///	///	///
176	///	///	///	///	///
177	///	///	///	///	///
178	///	///	///	///	///
179	///	///	///	///	///
180	///	///	///	///	///
181	///	///	///	///	///
182	///	///	///	///	///
183	///	///	///	///	///
184	///	///	///	///	///
185	///	///	///	///	///
186	///	///	///	///	///
187	///	///	///	///	///
188	///	///	///	///	///
189	///	///	///	///	///
190	///	///	///	///	///
191	///	///	///	///	///
192	///	///	///	///	///
193	///	///	///	///	///
194	///	///	///	///	///
195	///	///	///	///	///
196	///	///	///	///	///
197	///	///	///	///	///
198	///	///	///	///	///
199	///	///	///	///	///
200	///	///	///	///	///
201	///	///	///	///	///
202	///	///	///	///	///
203	///	///	///	///	///
204	///	///	///	///	///
205	///	///	///	///	///
206	///	///	///	///	///
207	///	///	///	///	///
208	///	///	///	///	///
209	///	///	///	///	///
210	///	///	///	///	///

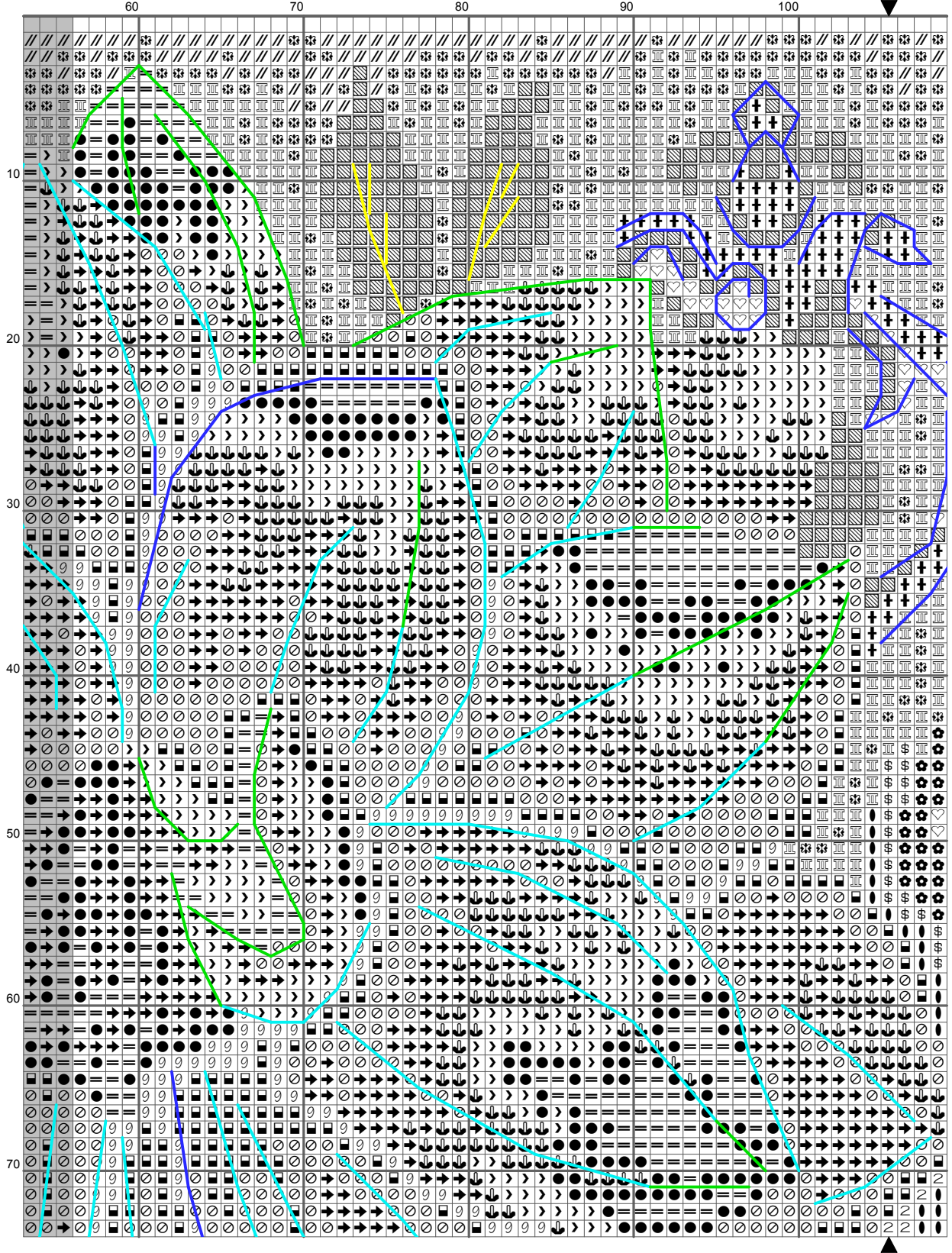


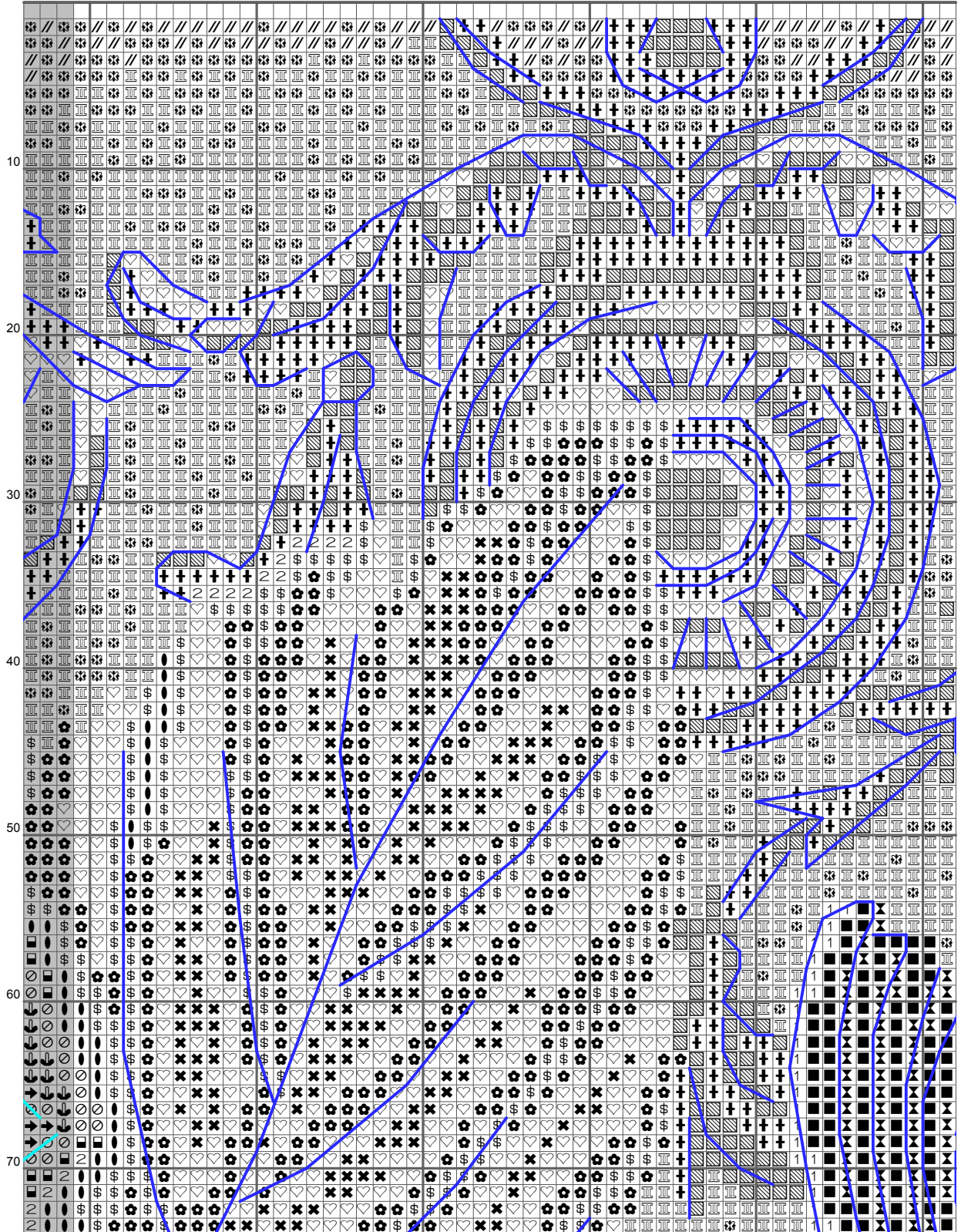
	110	120	130	140	150	160
150	1	1	1	1	1	1
155	1	1	1	1	1	1
160	1	1	1	1	1	1
165	1	1	1	1	1	1
170	1	1	1	1	1	1
175	1	1	1	1	1	1
180	1	1	1	1	1	1
185	1	1	1	1	1	1
190	1	1	1	1	1	1
195	1	1	1	1	1	1
200	1	1	1	1	1	1
205	1	1	1	1	1	1
210	1	1	1	1	1	1











160

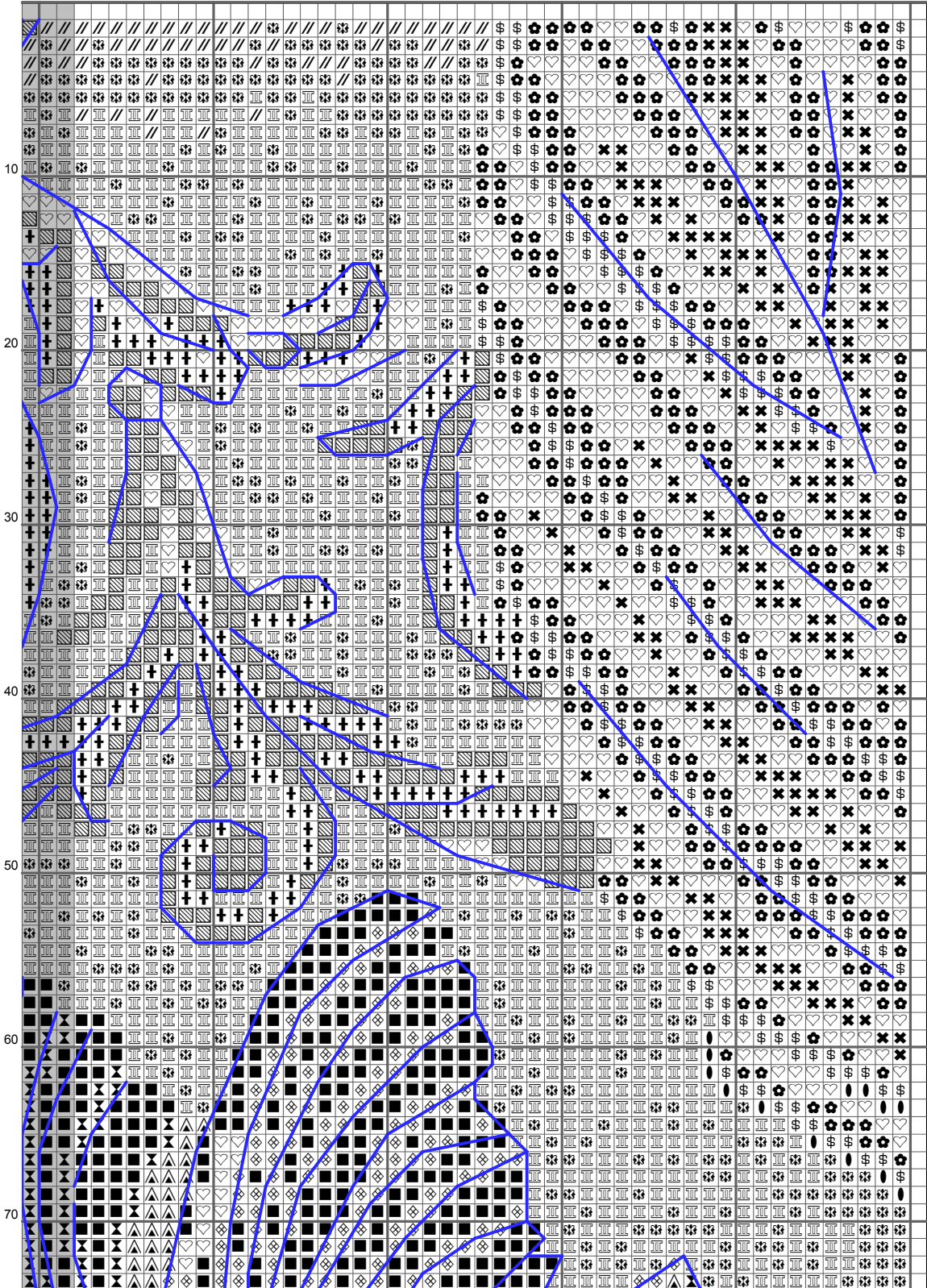
170

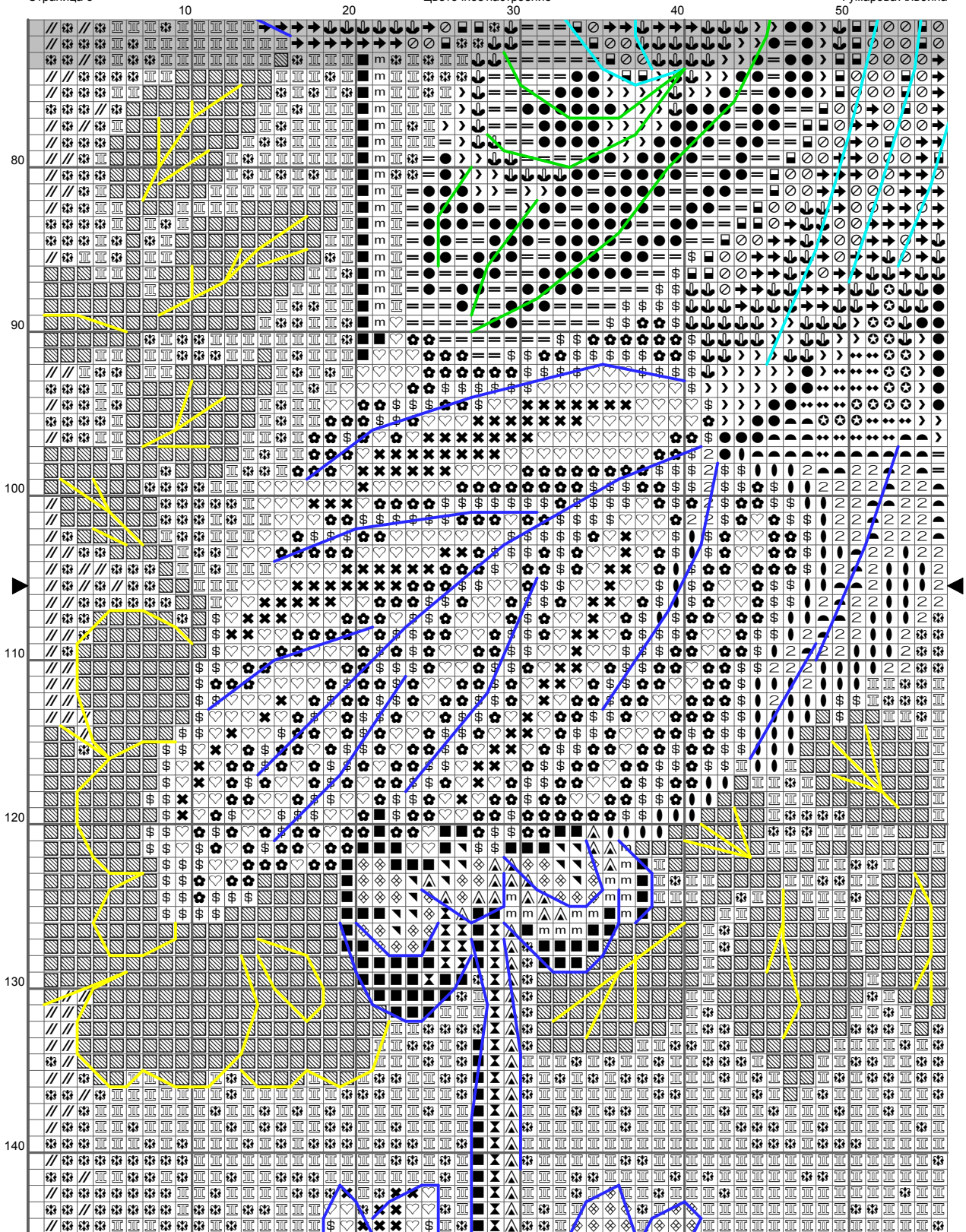
180

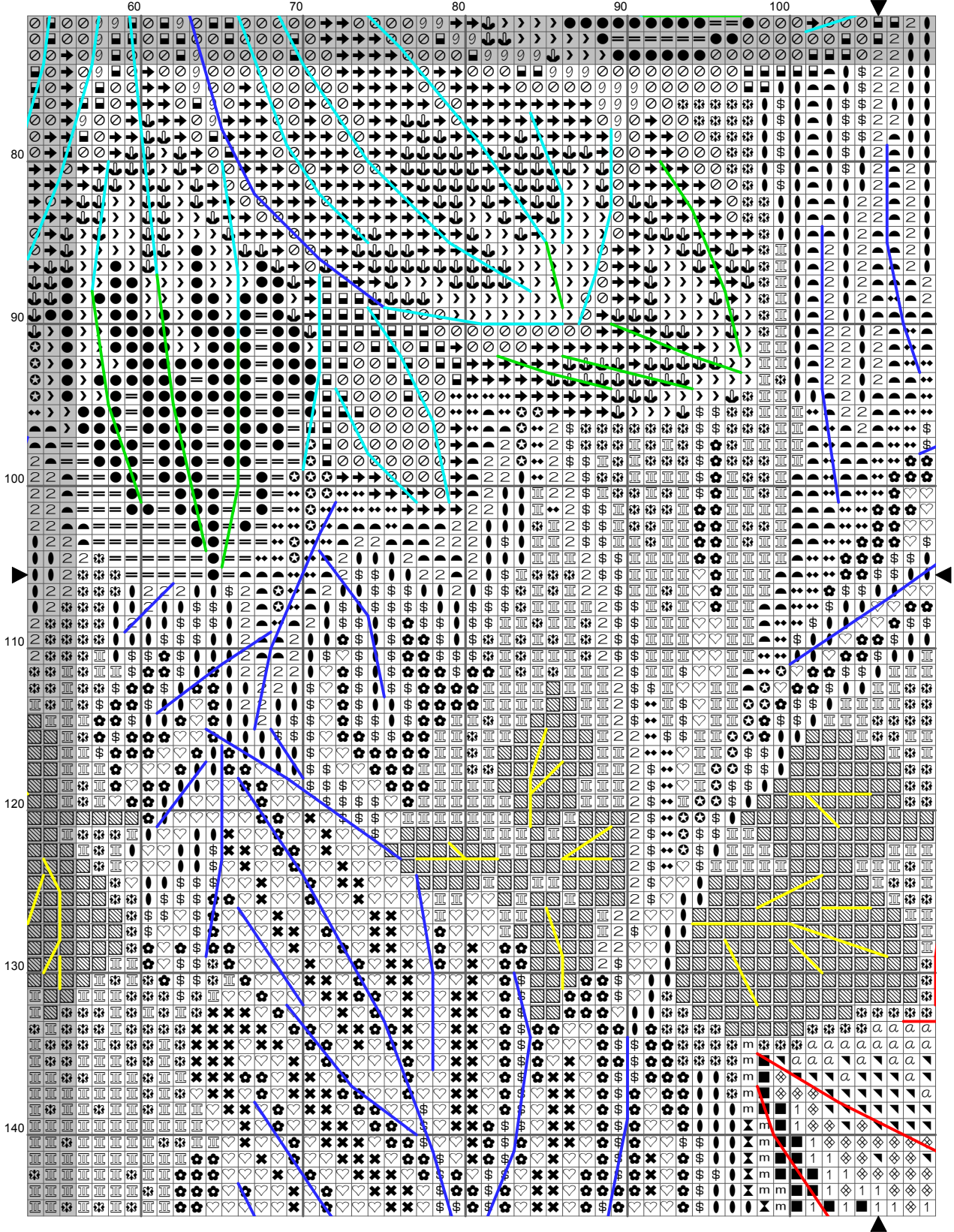
190

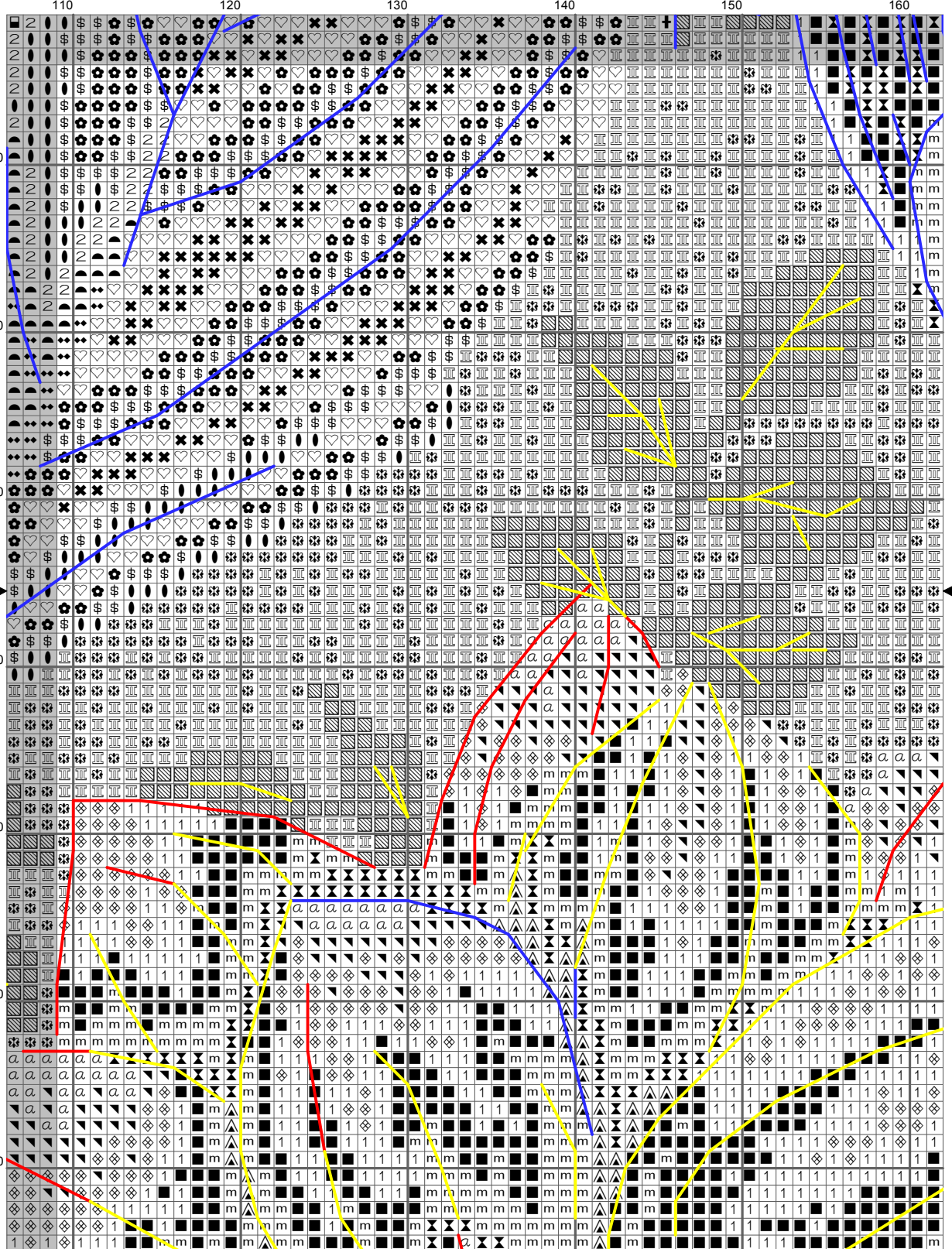
200

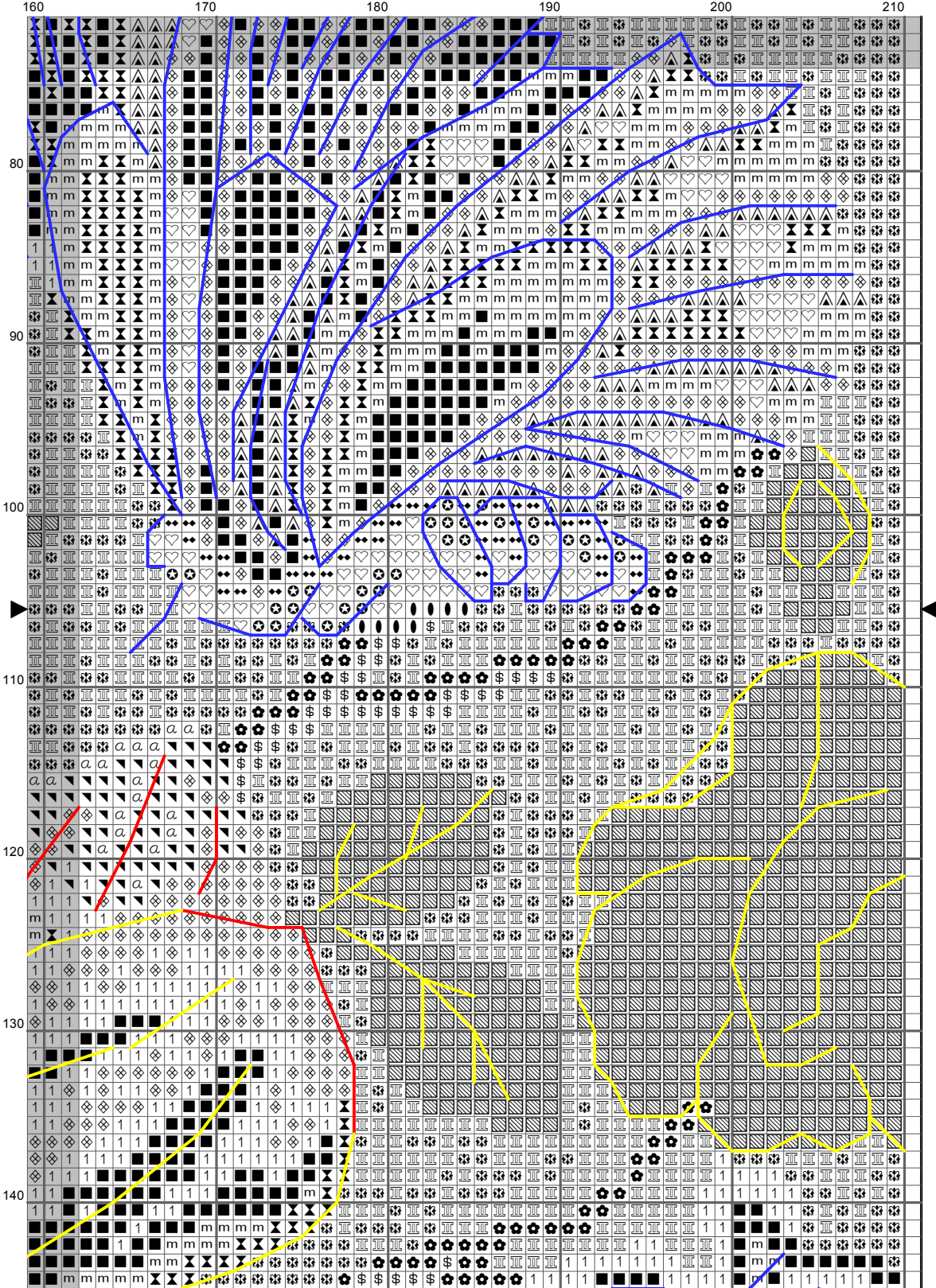
210

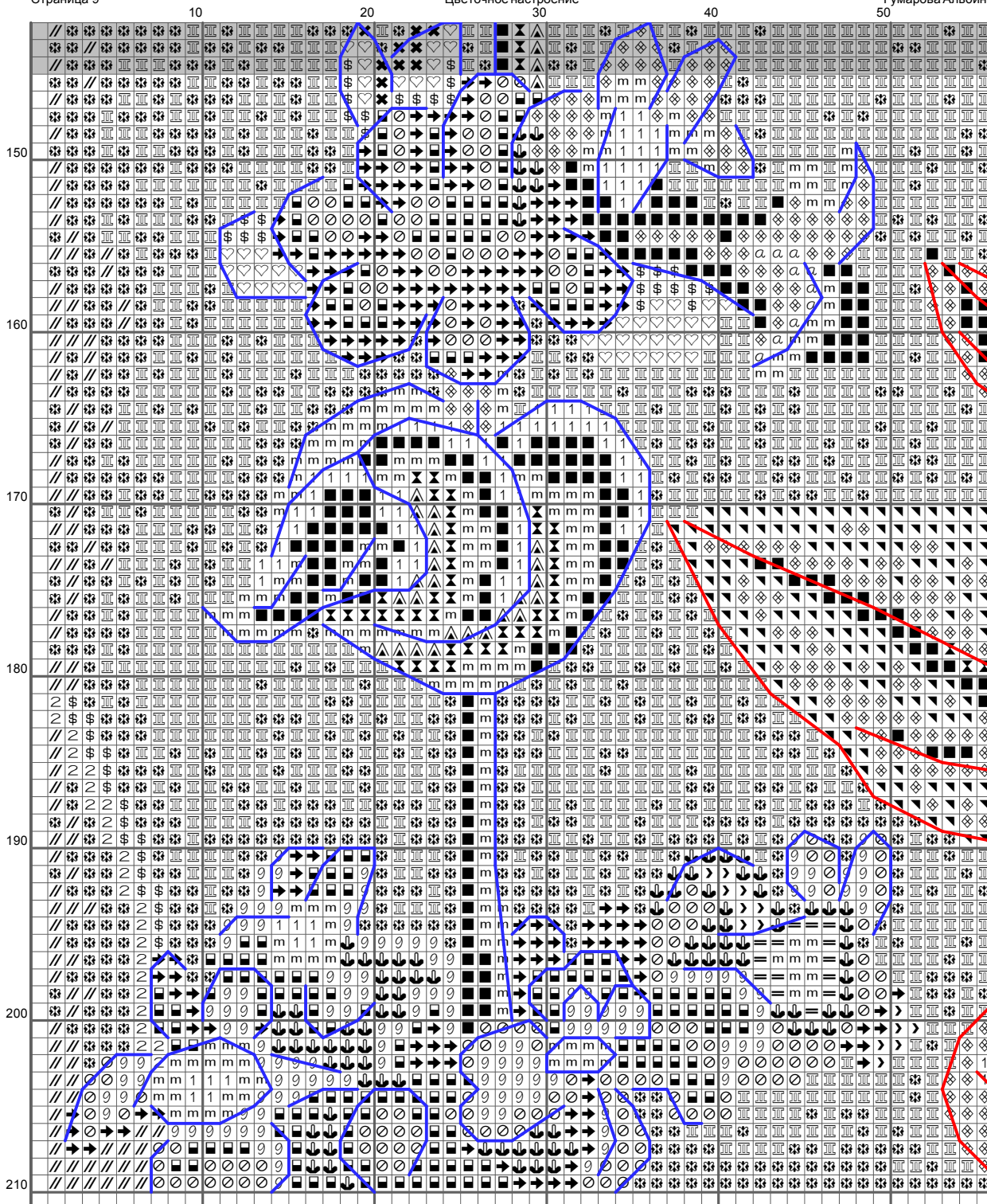




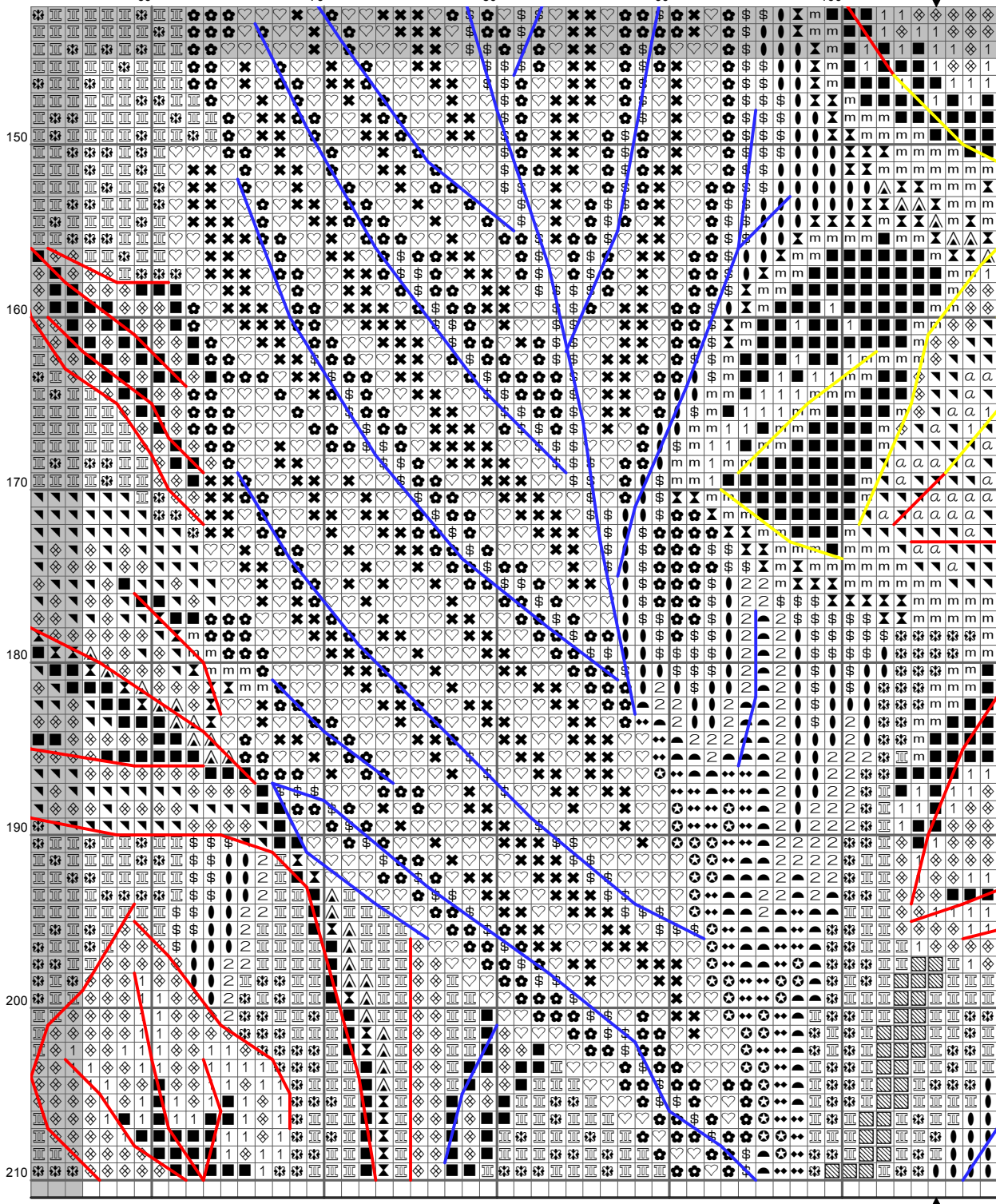


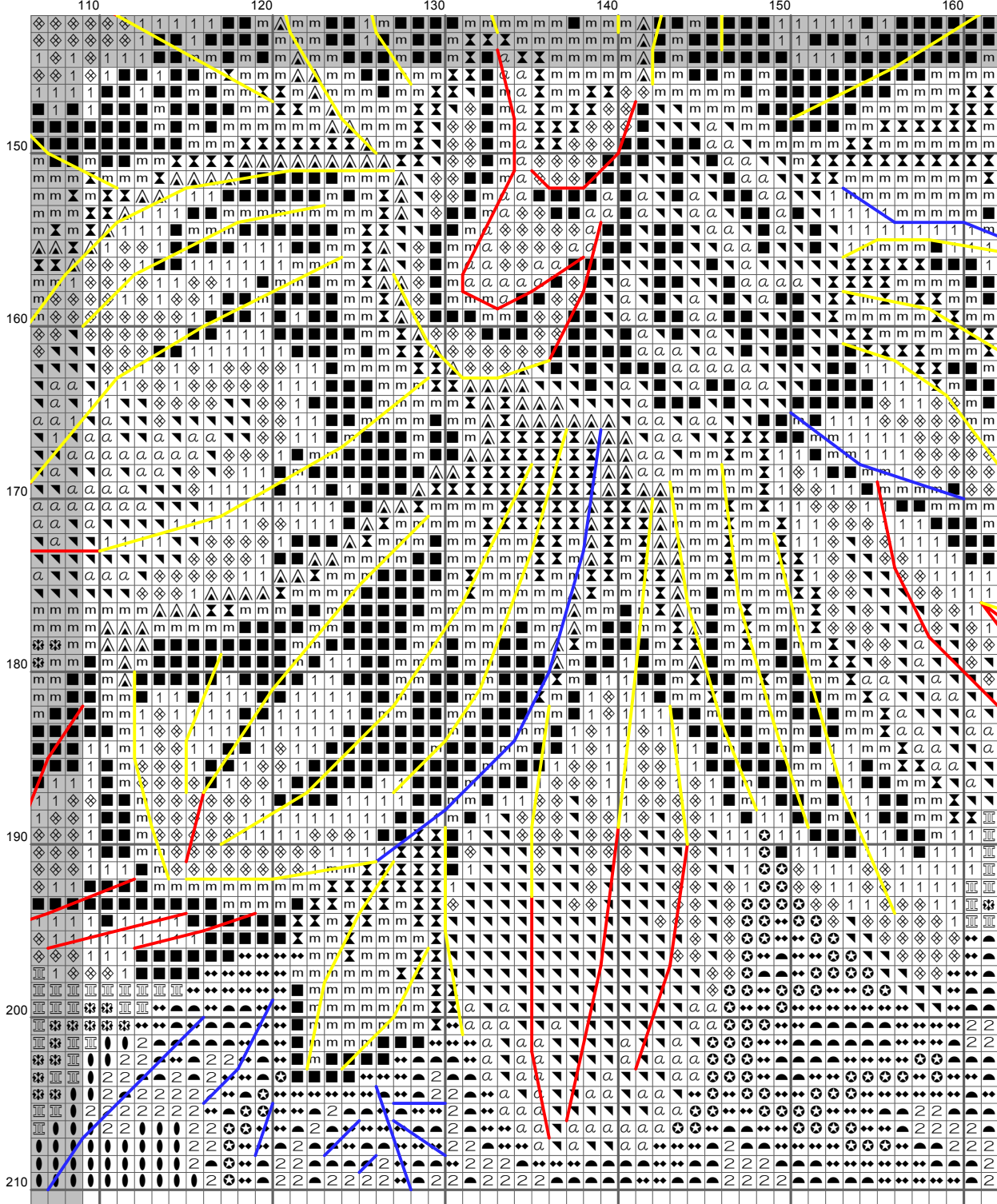


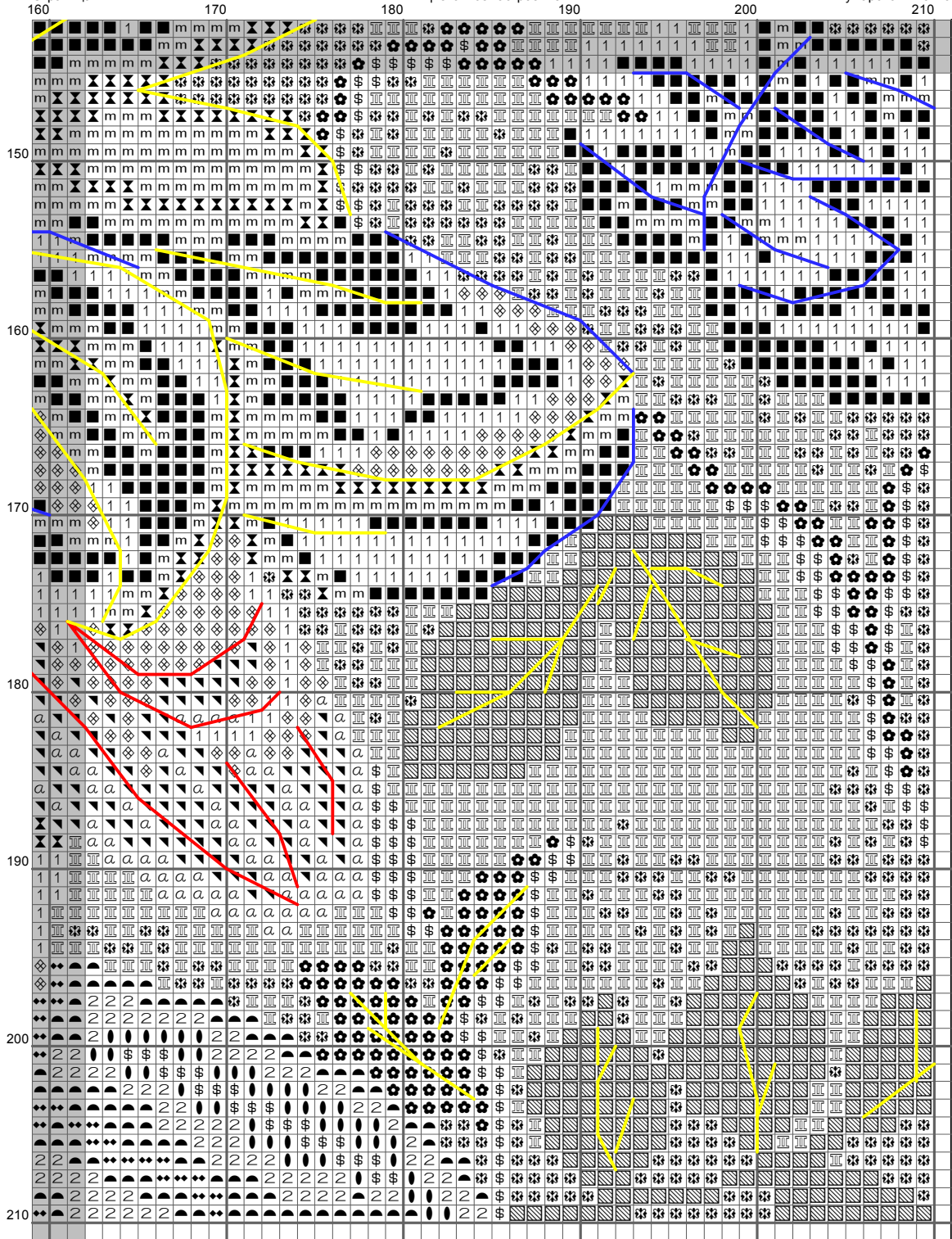


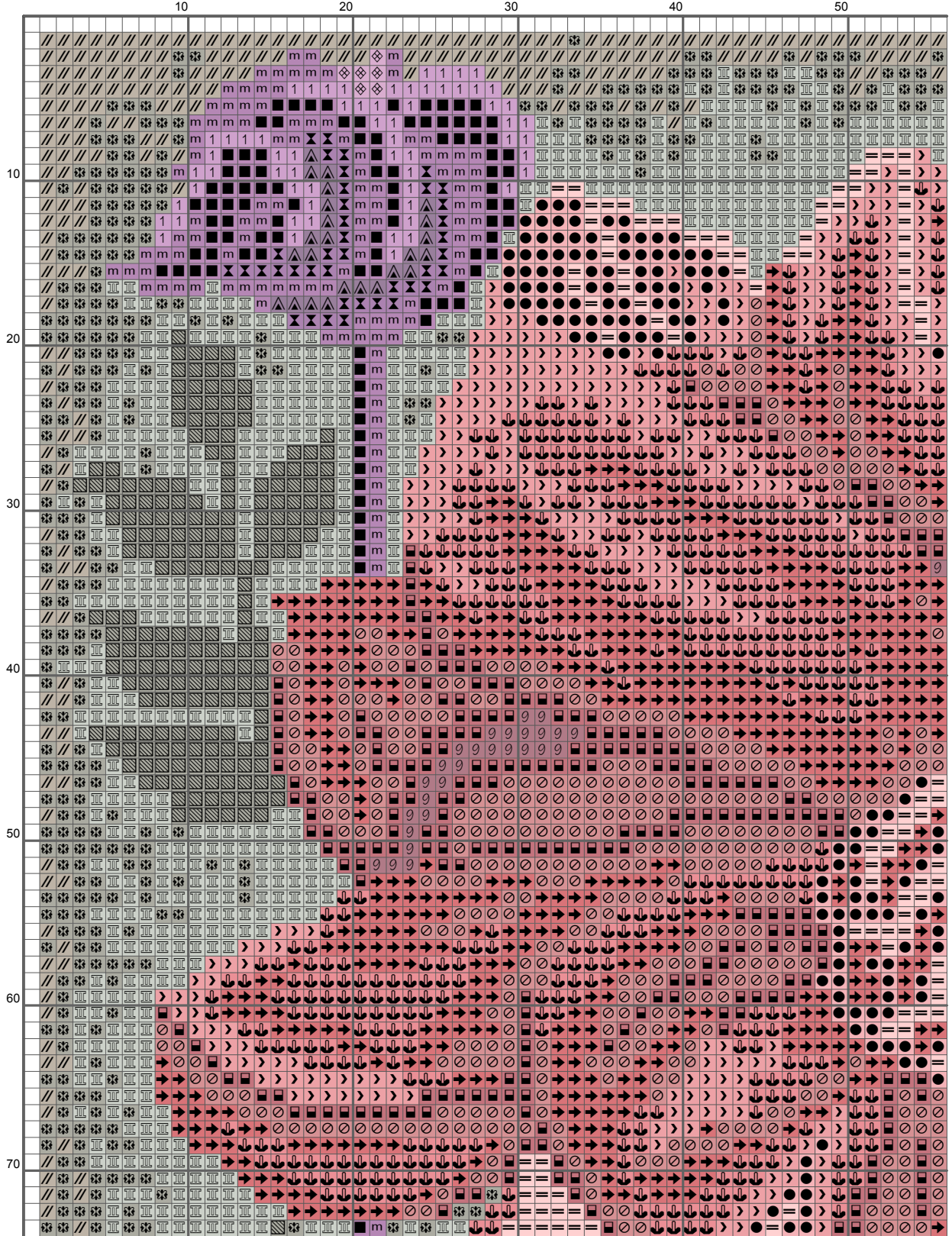


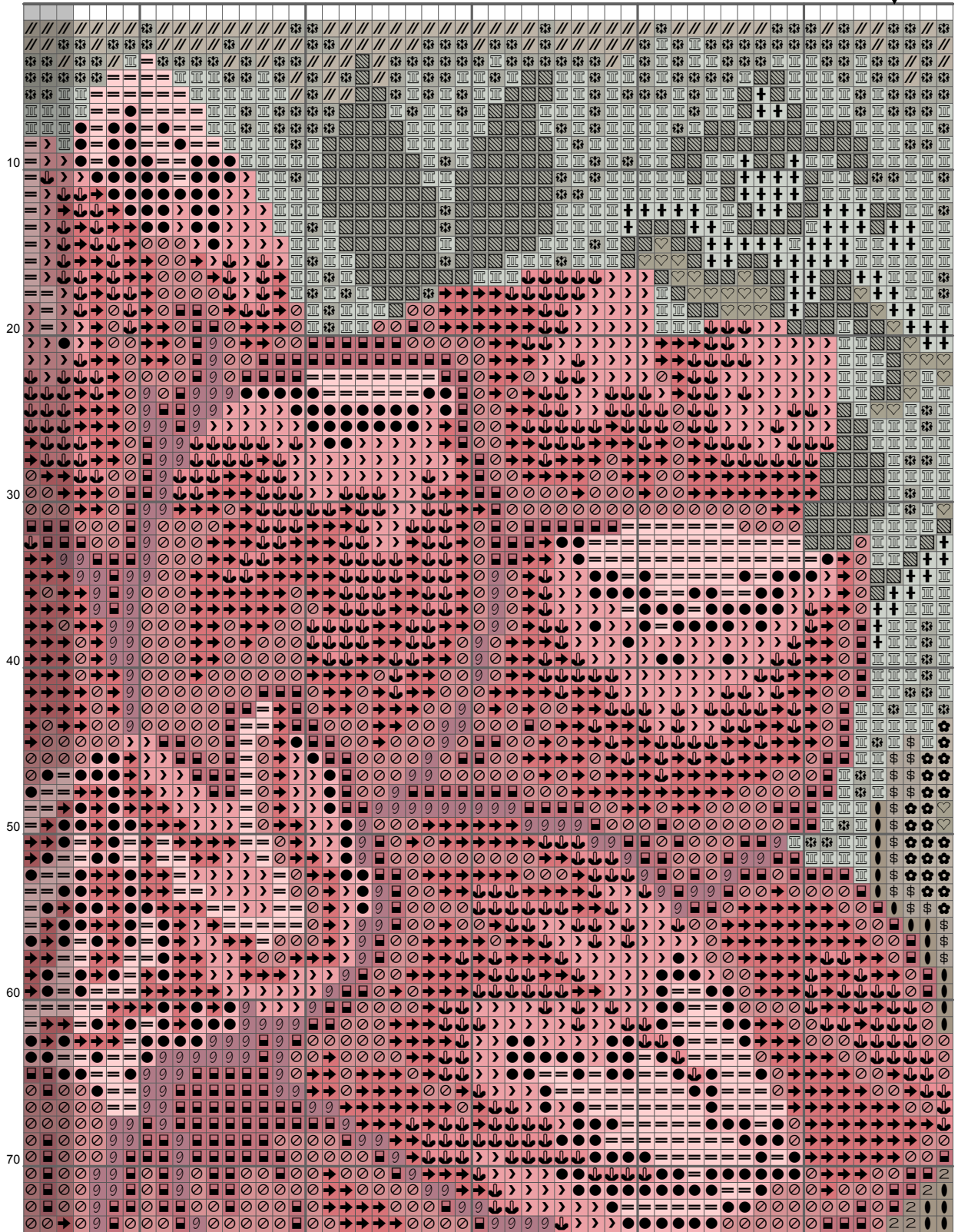


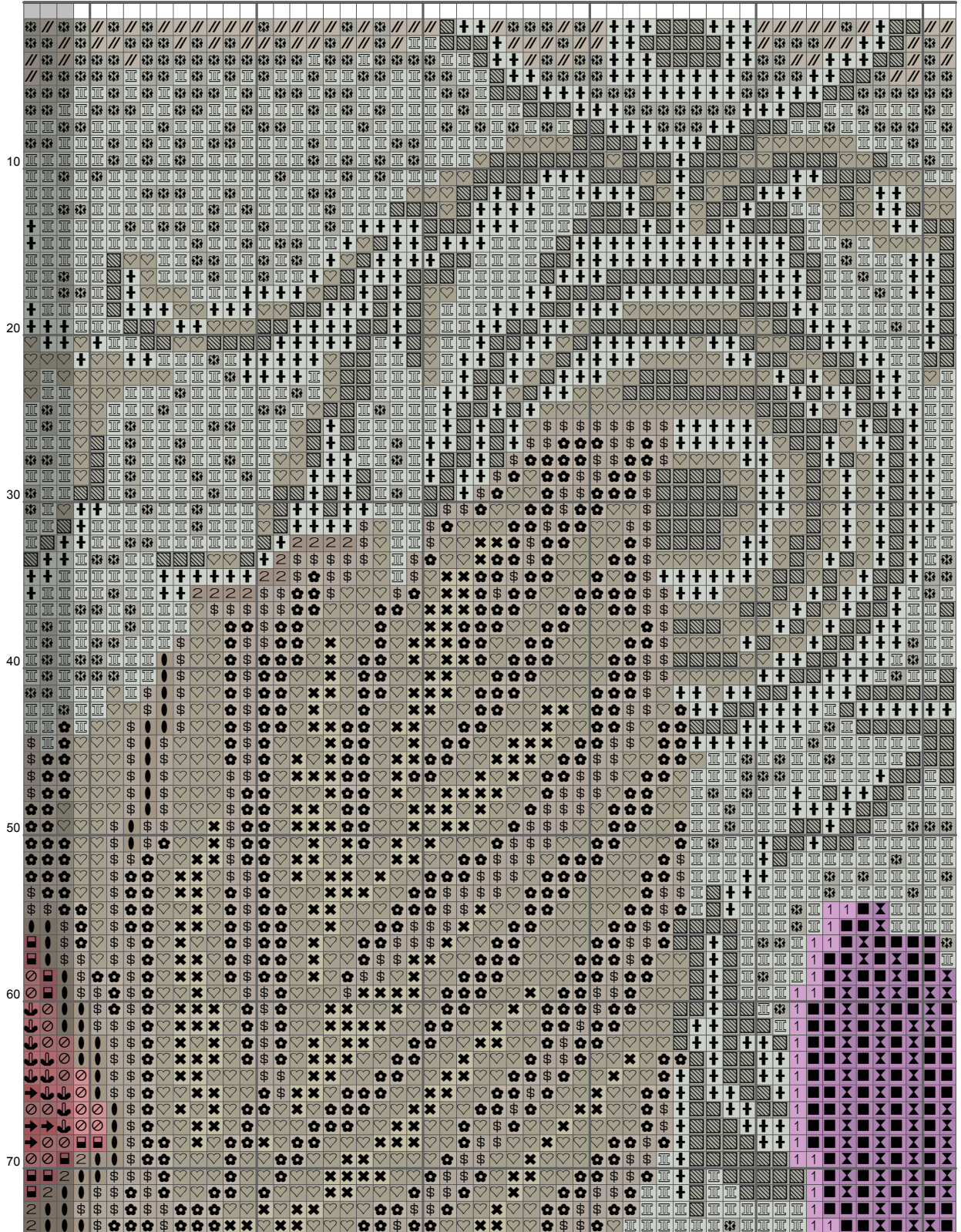












160

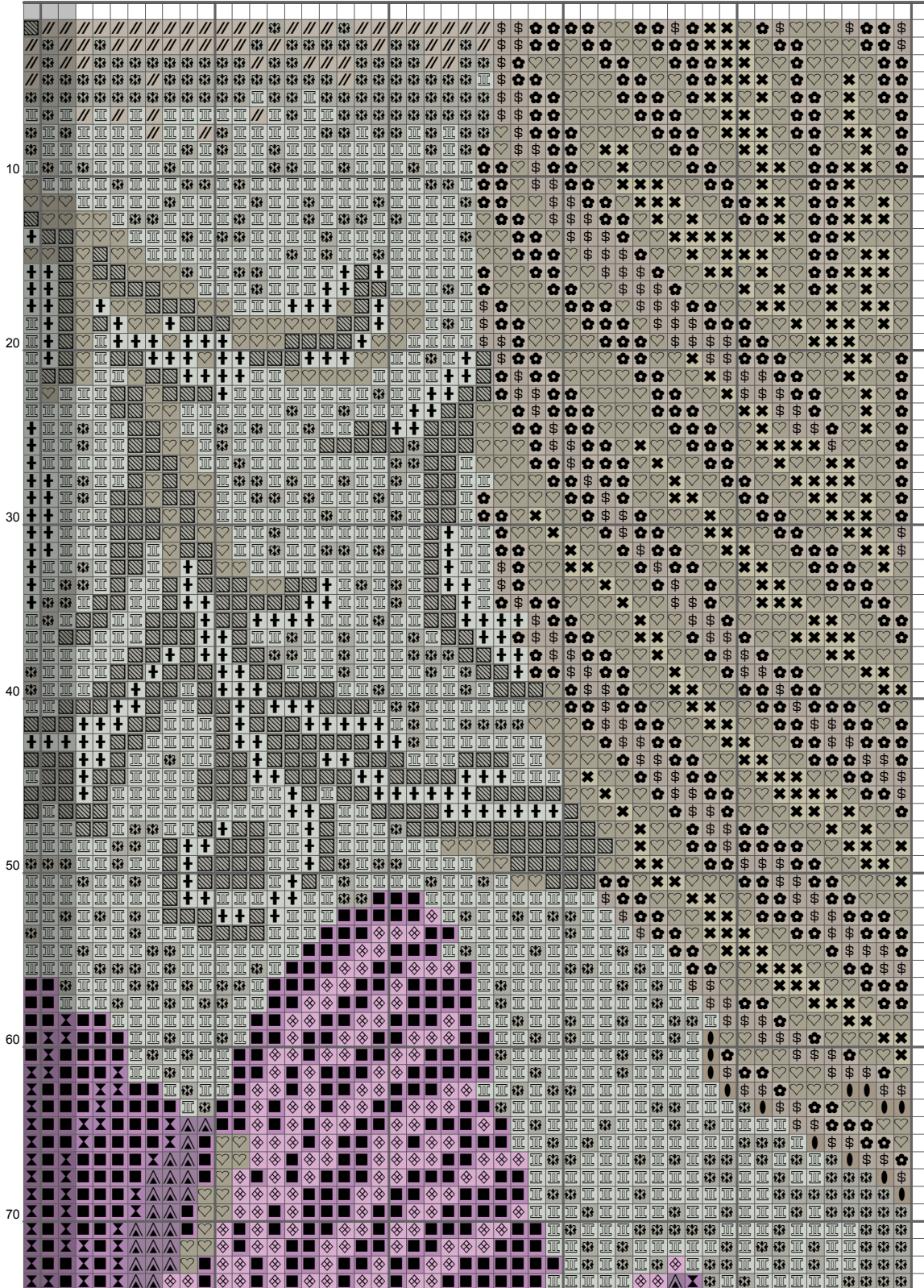
170

180

190

200

210



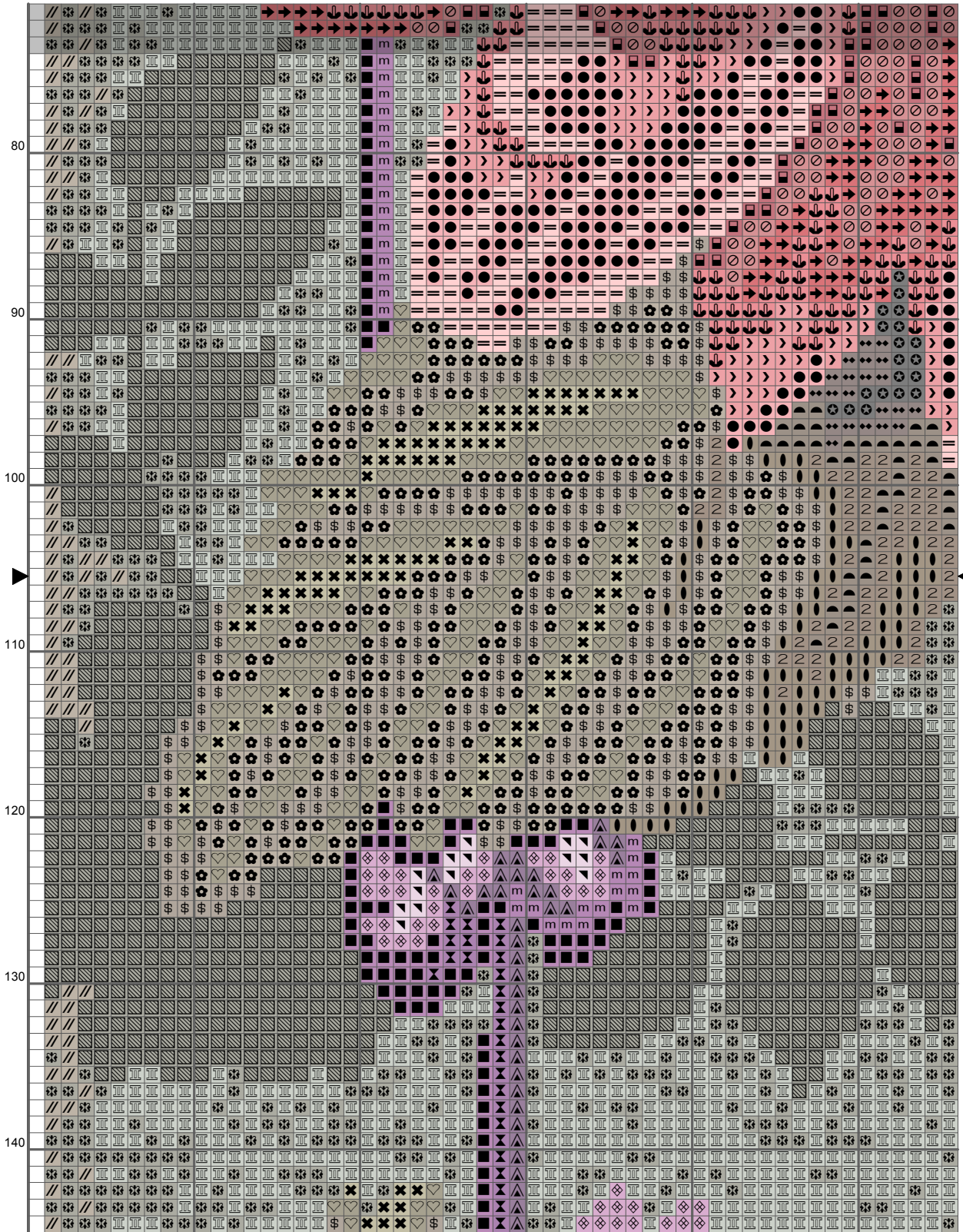
10

20

30

40

50





60

70

80

90

100

80

90

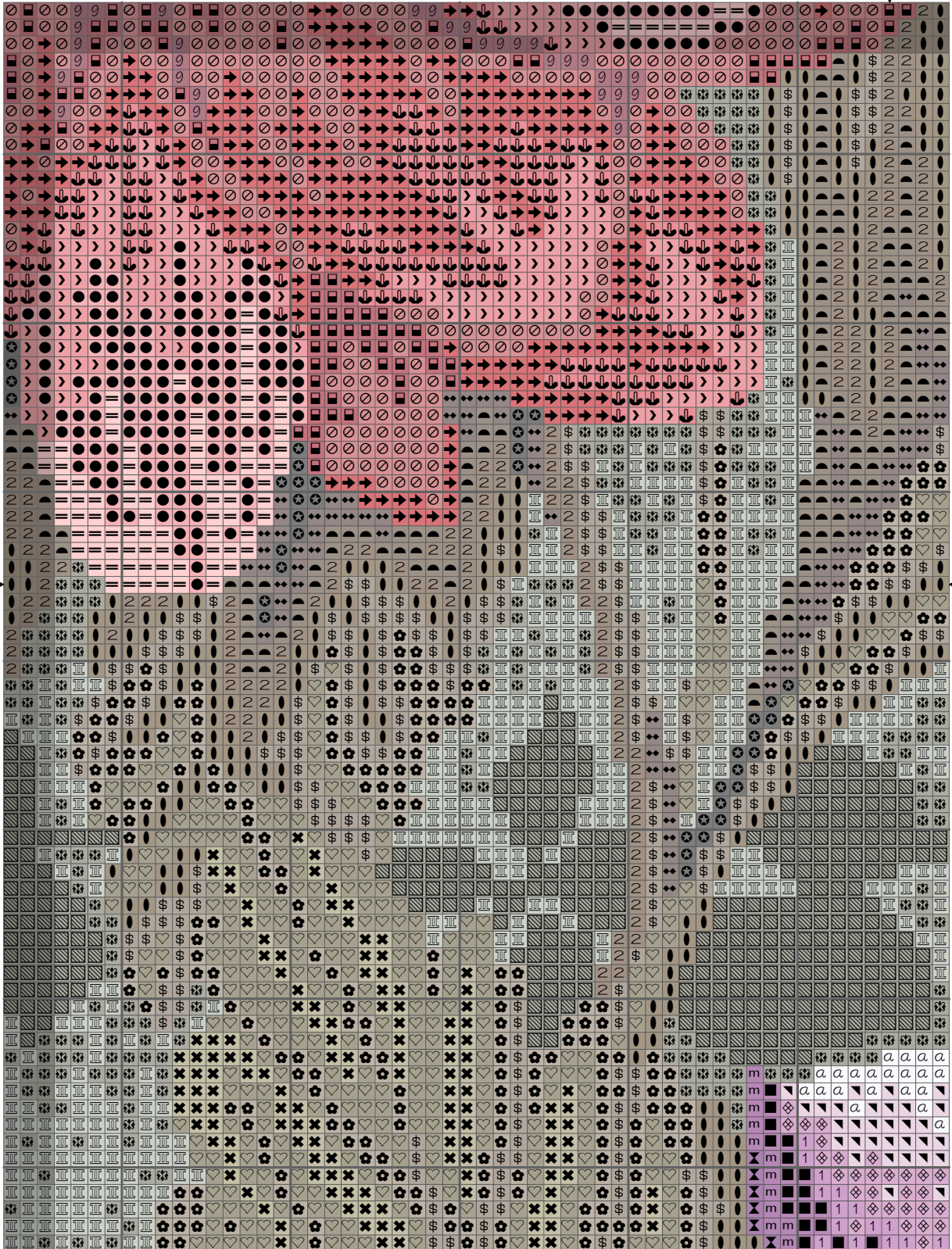
100

110

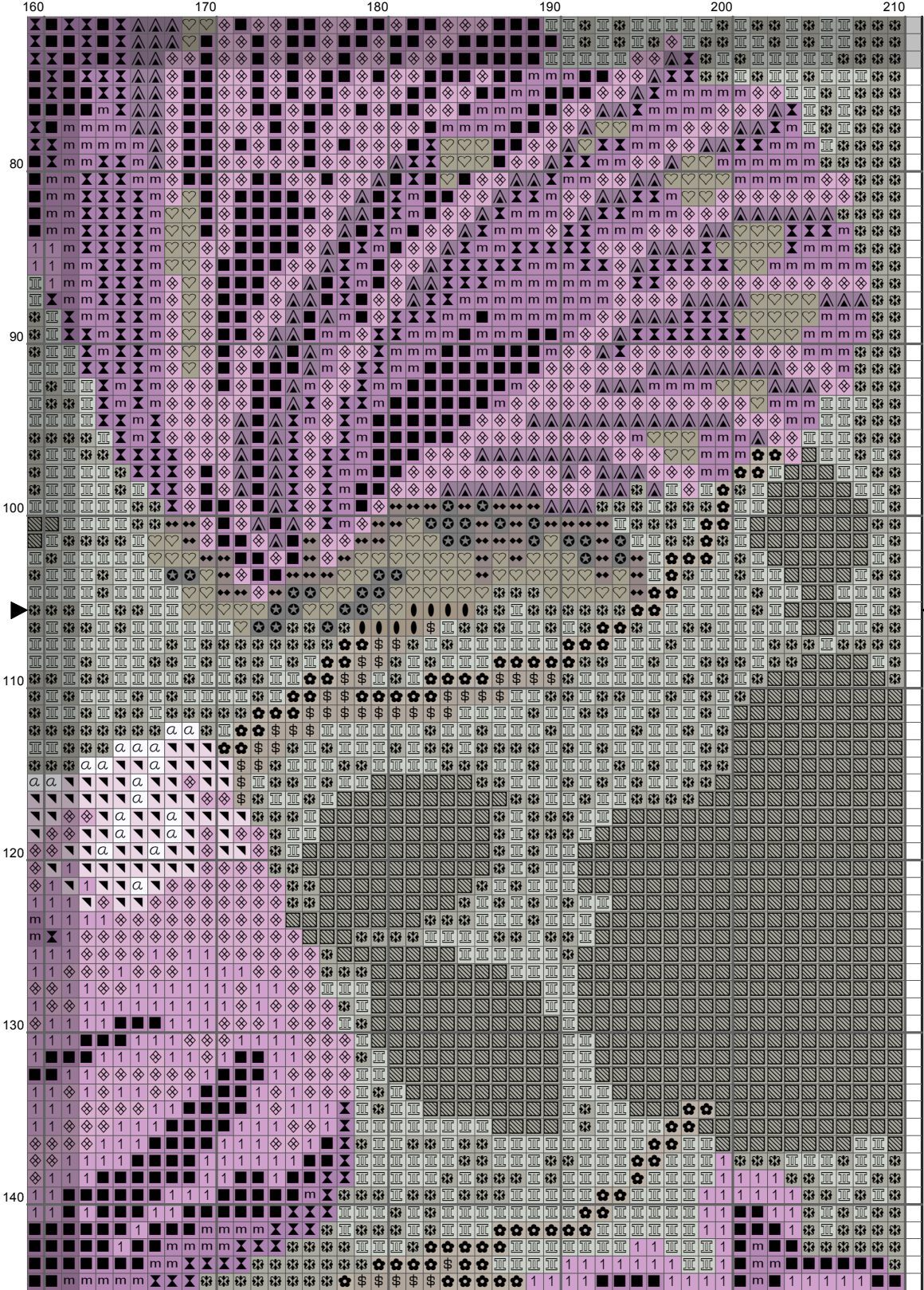
120

130

140







	10	20	30	40	50
150	150	150	150	150	150
160	160	160	160	160	160
170	170	170	170	170	170
180	180	180	180	180	180
190	190	190	190	190	190
200	200	200	200	200	200
210	210	210	210	210	210



150	160	170	180	190	200	210
-----	-----	-----	-----	-----	-----	-----

	160	170	180	190	200	210
	160	170	180	190	200	210
	160	170	180	190	200	210
	160	170	180	190	200	210
150						
160						
170						
180						
190						
200						
210						

