









Pattern Name: Starry Night Tree
Designed By: Julia Strekalova©
Company: e-PATTERN
Copyright: Julia Strekalova©
Fabric: Aida 14, White
 37w X 55h Stitches
Size: 14 Count, 6.71w X 9.98h cm

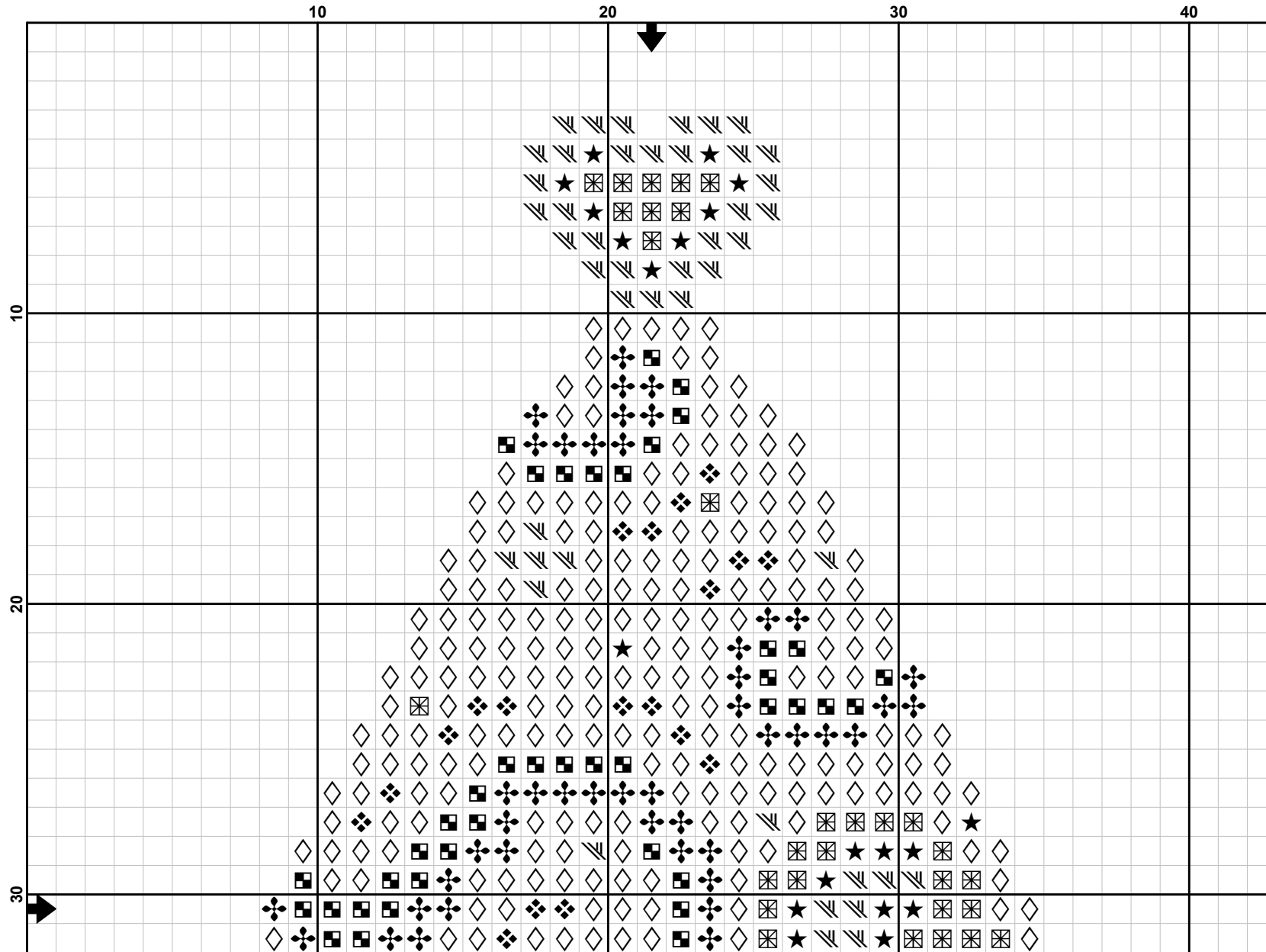
Floss Used for Full Stitches:

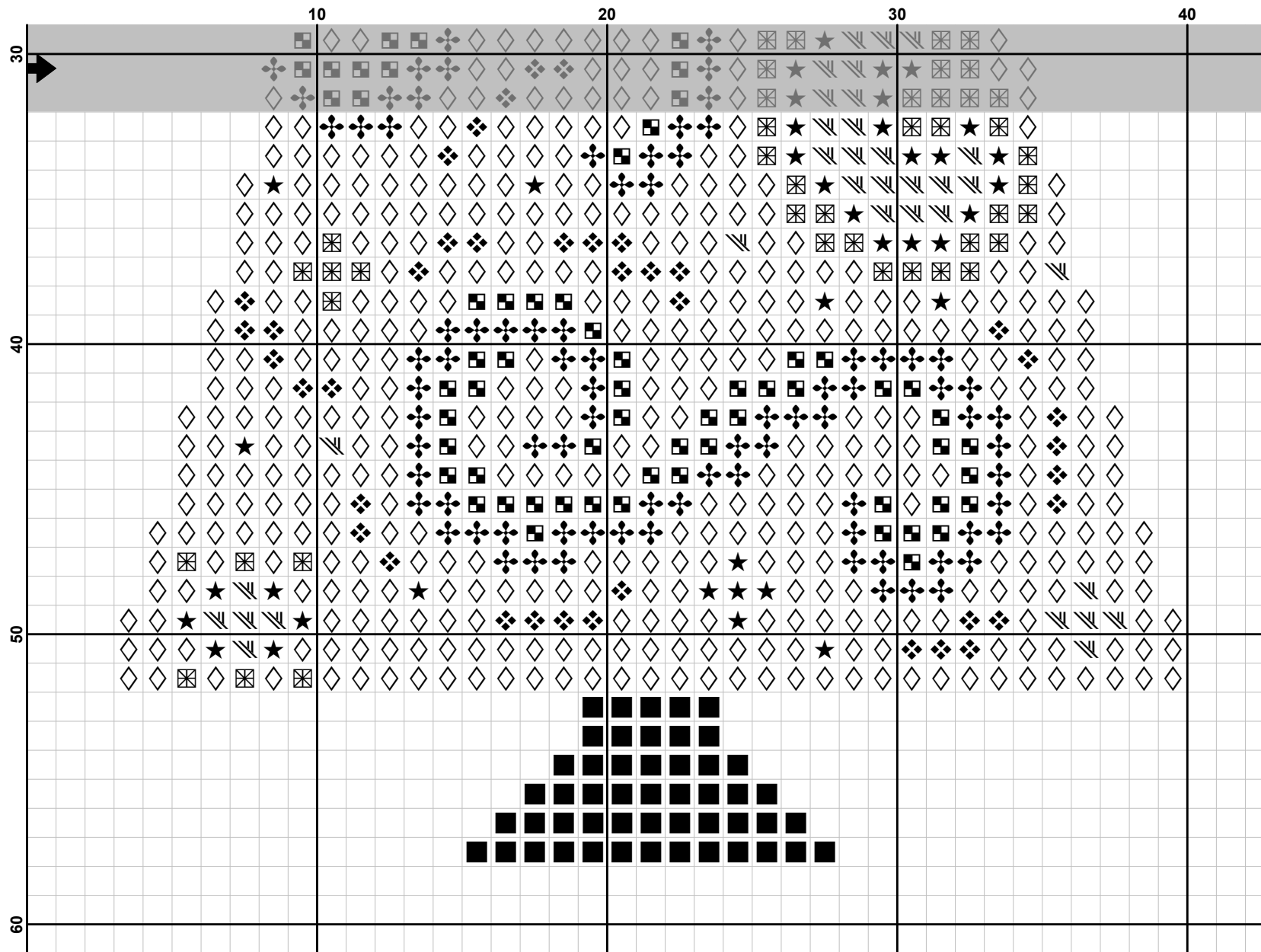
Symbol	Strands	Type	Number	Color
	2	DMC	334	Baby Blue-MD
	2	DMC	445	Lemon-LT
	2	DMC	824	Blue-VY DK
	2	DMC	972	Canary-DK
	2	DMC	973	Lemon-BRT
	2	DMC	996	Electric Blue-MD
	2	DMC	3766	Peacock Blue-LT
	2	DMC	3862	Mocha Beige-DK

Notes:

No commercial use. For personal use only!









Только для личного использования. Перепродажа и копирование запрещены!





Pattern Name: Starry Night Tree
Designed By: Julia Strekalova©
Company: e-PATTERN
Copyright: Julia Strekalova©
Fabric: Aida 14, White
 37w X 55h Stitches
Size: 14 Count, 6.71w X 9.98h cm

Floss Used for Full Stitches:

Symbol	Strands	Type	Number	Color
 ❖	2	DMC	334	Baby Blue-MD
 ☒	2	DMC	445	Lemon-LT
 ◇	2	DMC	824	Blue-VY DK
 ✎	2	DMC	972	Canary-DK
 ★	2	DMC	973	Lemon-BRT
 ✦	2	DMC	996	Electric Blue-MD
 ■	2	DMC	3766	Peacock Blue-LT
 ■	2	DMC	3862	Mocha Beige-DK

Notes:

No commercial use. For personal use only!

Только для личного использования. Перепродажа и копирование запрещены!