



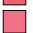




Pattern Name: Roses (Розы)
Designed By: Julia Strekalova©
Copyright: Julia Strekalova©
Fabric: Aida 14, White
 83w X 71h Stitches
Size: 14 Count, 15.06w X 12.88h cm

Floss Used for Full Stitches:

Symbol	Strands	Type	Number	Color
	2	DMC	701	Christmas Green-MD
	2	DMC	702	Christmas Green
	2	DMC	704	Christmas Green-VY LT
	2	DMC	891	Carnation-DK
	2	DMC	892	Carnation-MD
	2	DMC	893	Carnation-LT
	2	DMC	894	Carnation-VY LT

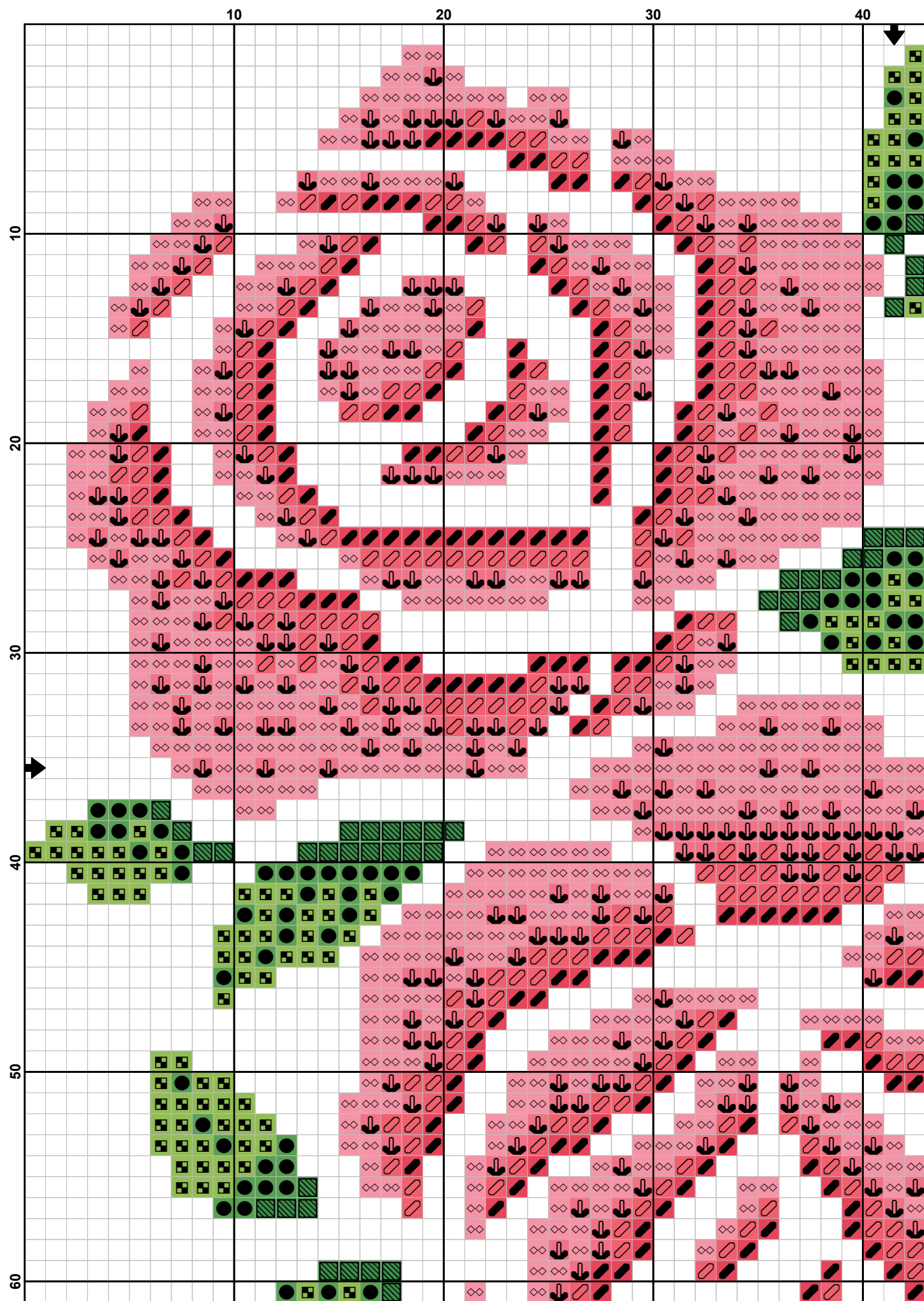
Notes:

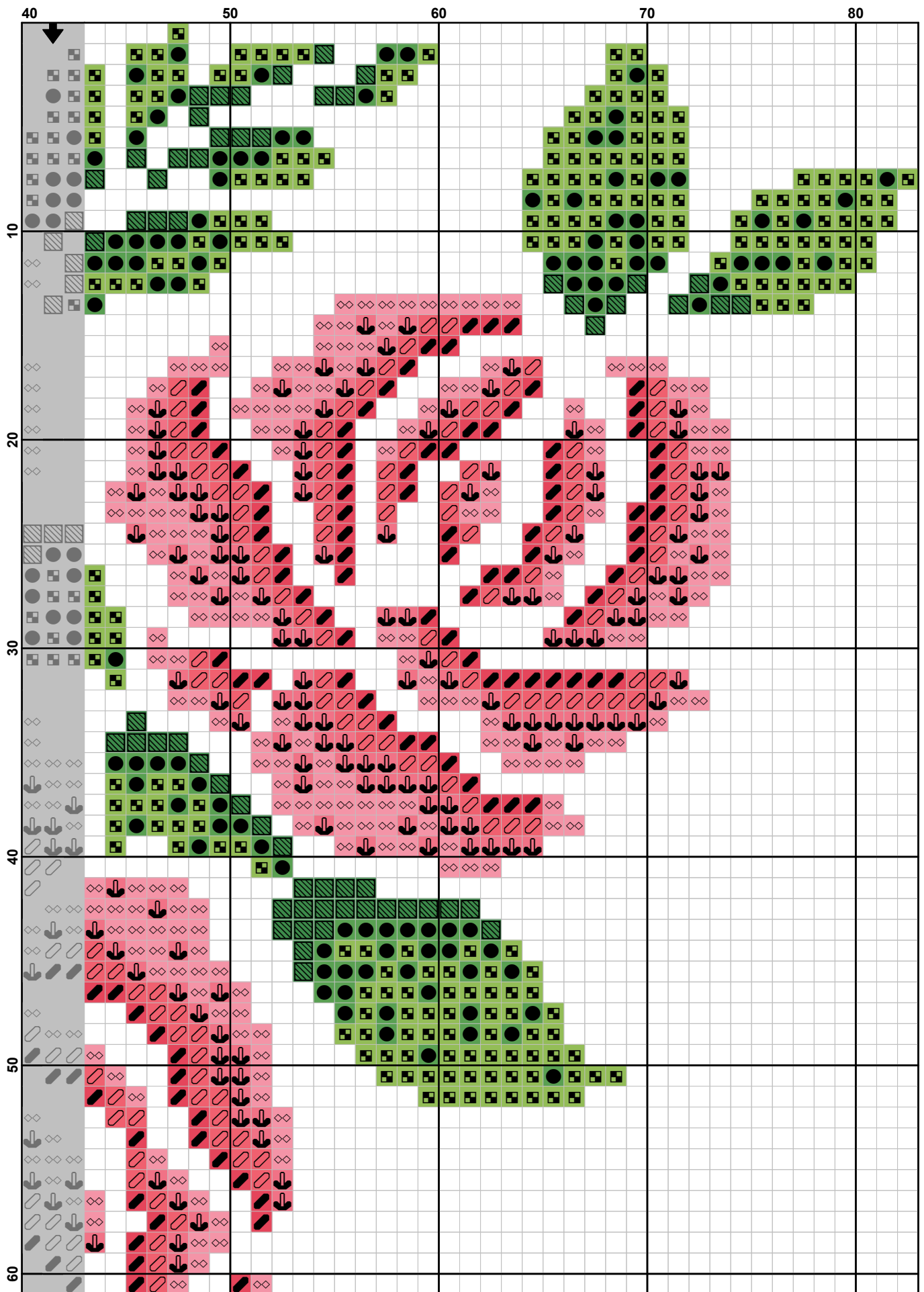
No commercial use. For personal use only!

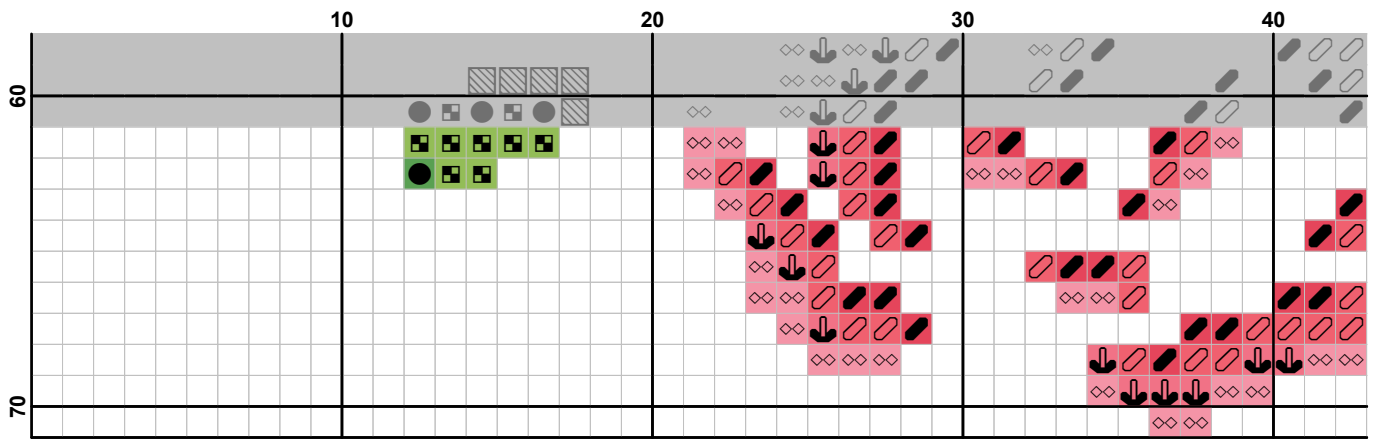
Только для личного использования. Перепродажа и копирование запрещены!

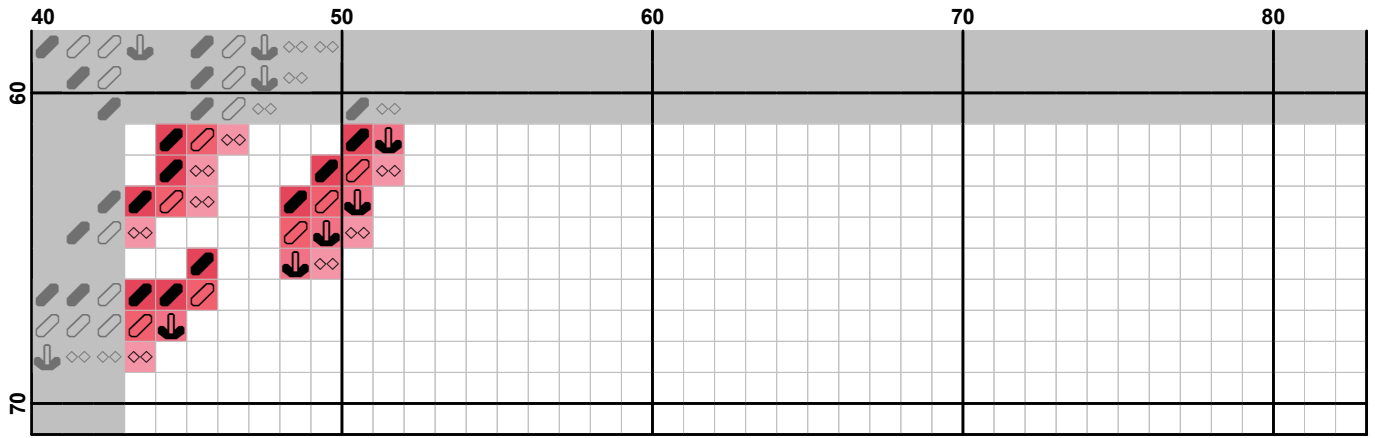
Usage Summary**Strands Per Skein:** 6**Skein Length:** 795.0 cm

Type	Number	Full	Half	Quarter	Petite	Back (cm)	Str (cm)	Spec (cm)	French	Bead	Skein Est.
■ DMC	701	103	0	0	0	0.0	0.0	0.0	0	0	1.000
■ DMC	702	170	0	0	0	0.0	0.0	0.0	0	0	1.000
■ DMC	704	316	0	0	0	0.0	0.0	0.0	0	0	1.000
■ DMC	891	310	0	0	0	0.0	0.0	0.0	0	0	1.000
■ DMC	892	377	0	0	0	0.0	0.0	0.0	0	0	1.000
■ DMC	893	402	0	0	0	0.0	0.0	0.0	0	0	1.000
■ DMC	894	779	0	0	0	0.0	0.0	0.0	0	0	1.000







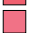








Pattern Name: Roses (Розы)
Designed By: Julia Strekalova©
Copyright: Julia Strekalova©
Fabric: Aida 14, White
 83w X 71h Stitches
Size: 14 Count, 15.06w X 12.88h cm

Floss Used for Full Stitches:

Symbol	Strands	Type	Number	Color
	2	DMC	701	Christmas Green-MD
	2	DMC	702	Christmas Green
	2	DMC	704	Christmas Green-VY LT
	2	DMC	891	Carnation-DK
	2	DMC	892	Carnation-MD
	2	DMC	893	Carnation-LT
	2	DMC	894	Carnation-VY LT

Notes:

No commercial use. For personal use only!

Только для личного использования. Перепродажа и копирование запрещены!

Usage Summary**Strands Per Skein:** 6**Skein Length:** 795.0 cm

Type	Number	Full	Half	Quarter	Petite	Back (cm)	Str (cm)	Spec (cm)	French	Bead	Skein Est.
■ DMC	701	103	0	0	0	0.0	0.0	0.0	0	0	1.000
■ DMC	702	170	0	0	0	0.0	0.0	0.0	0	0	1.000
■ DMC	704	316	0	0	0	0.0	0.0	0.0	0	0	1.000
■ DMC	891	310	0	0	0	0.0	0.0	0.0	0	0	1.000
■ DMC	892	377	0	0	0	0.0	0.0	0.0	0	0	1.000
■ DMC	893	402	0	0	0	0.0	0.0	0.0	0	0	1.000
■ DMC	894	779	0	0	0	0.0	0.0	0.0	0	0	1.000